



Figure 1. *Pheidole albipes*, full-face view (A), profile (C), and dorsal view (E) of major worker (JTLC000010035) and full-face view (B), profile (D), and dorsal view (F) of minor worker (JTLC000009724).



Figure 2 *Pheidole azteca*, full-face view (A), profile (C), and dorsal view (E) of major worker (JTL000016325) and full-face view (B), profile (D), and dorsal view (F) of minor worker (CASENT0649707).



Figure 3. *Pheidole bilimeki*, full-face view (A), profile (C), and dorsal view (E) of major worker (CASENT0649571) and full-face view (B), profile (D), and dorsal view (F) of minor worker (CASENT0649570).





Figure 4. *Pheidole centeotl*, full-face view (A), profile (C), and dorsal view (E) of major worker (JTL000010334) and full-face view (B), profile (D), and dorsal view (F) of minor worker (CASENT0649706).



Figure 5. *Pheidole ceres*, full-face view (A), profile (C), and dorsal view (E) of major worker (CASENT0102870) and full-face view (B), profile (D), and dorsal view (F) of minor worker (CASENT0102871).



Figure 6. *Pheidole chalca*, full-face view (A), profile (C), and dorsal view (E) of major worker (CASENT0631889) and full-face view (B), profile (D), and dorsal view (F) of minor worker (CASENT0631888).





Figure 7. *Pheidole deceptrix*, full-face view (A), profile (C), and dorsal view (E) of major worker (CASENT0611124) and full-face view (B), profile (D), and dorsal view (F) of minor worker (CASENT0611123).



Figure 8. *Pheidole dwyeri*, full-face view (A), profile (C), and dorsal view (E) of major worker (CASENT0649578) and full-face view (B), profile (D), and dorsal view (F) of minor worker (CASENT0649580).





Figure 9. *Pheidole erethizon*, full-face view (A), profile (C), and dorsal view (E) of major (JTLC000016369) and full-face view (B), profile (D), and dorsal view (F) of minor worker (CASENT0649708).



Figure 10. *Pheidole fimbriata*, full-face view (A), profile (C), and dorsal view (E) of major worker (CASENT0178017) and full-face view (B), profile (D), and dorsal view (F) of minor worker (CASENT0178018).



Figure 11. *Pheidole glomericeps*, full-face view (A), profile (C), and dorsal view (E) of major worker (JTLC000014002) and full-face view (B), profile (D), and dorsal view (F) of minor worker (JTLC000014003).



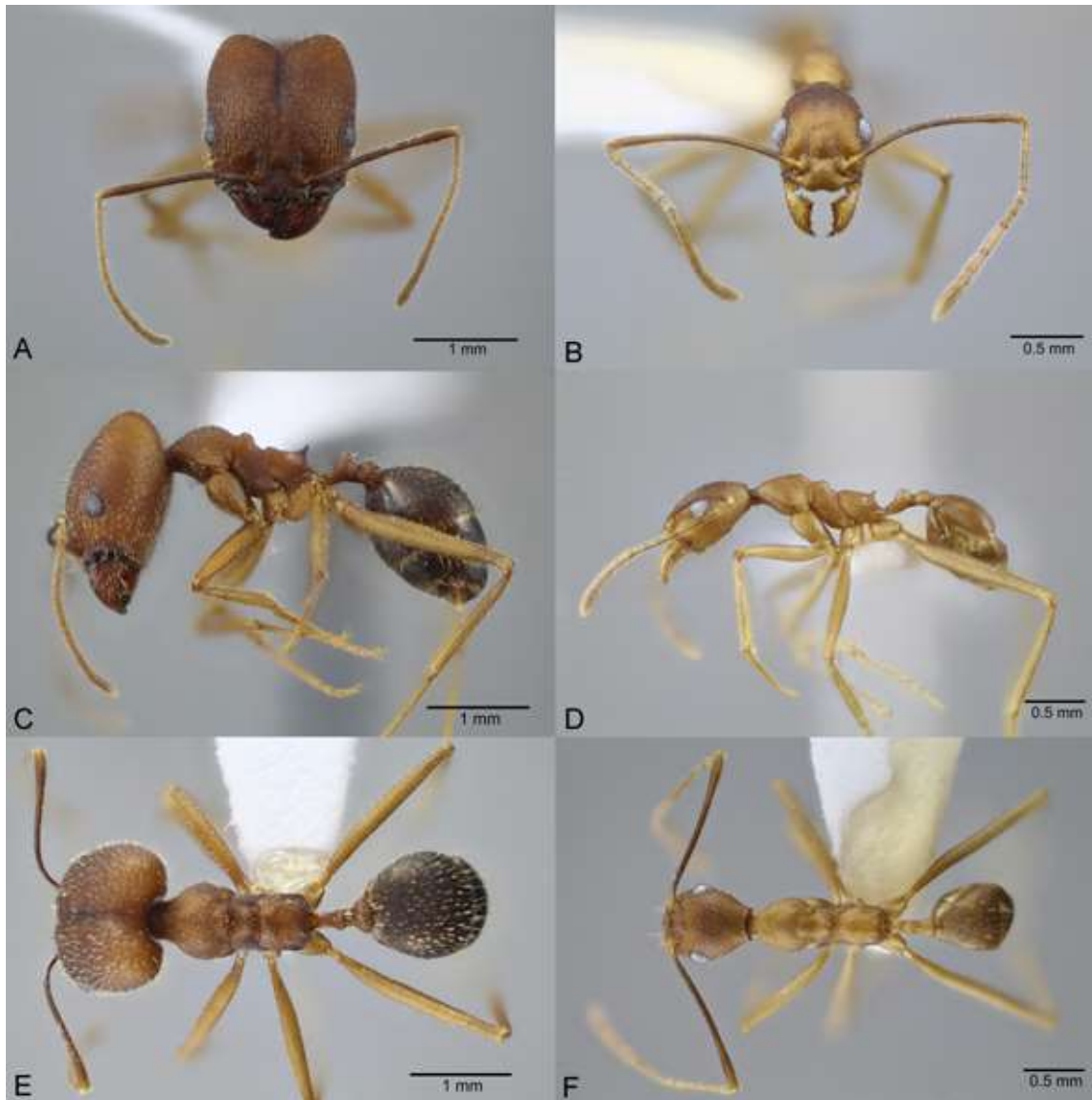


Figure 12. *Pheidole granulata*, full-face view (A), profile (C), and dorsal view (E) of major worker (CASENT0649585) and full-face view (B), profile (D), and dorsal view (F) of minor worker (CASENT0649589).



Figure 13. *Pheidole harrisonfordi*, full-face view (A), profile (C), and dorsal view (E) of major worker (JTL000016399) and full-face view (B), profile (D), and dorsal view (F) of minor worker (CASENT0646277).



Figure 14. *Pheidole hoplitica*, full-face view (A), profile (C), and dorsal view (E) of major worker (JTL000016399) and full-face view (B), profile (D), and dorsal view (F) of minor worker (CASENT0646277).





Figure 15. *Pheidole laevivertex*, full-face view (A), profile (C), and dorsal view (E) of major worker (CASENT0649599) and full-face view (B), profile (D), and dorsal view (F) of minor worker (CASENT0649600).



Figure 16. *Pheidole mixteca*, full-face view (A), profile (C), and dorsal view (E) of major worker (XXX) and full-face view (B), profile (D), and dorsal view (F) of minor worker (CASENT0649604).



Figure 17. *Pheidole nebulosa*, full-face view (A), profile (C), and dorsal view (E) of major worker (CASENT0649605) and full-face view (B), profile (D), and dorsal view (F) of minor worker (CASENT0649606).





Figure 18. *Pheidole nubicola*, full-face view (A), profile (C), and dorsal view (E) of major worker (CASENT0640821) and full-face view (B), profile (D), and dorsal view (F) of minor worker (CASENT0649611).



Figure 19. *Pheidole obtusospinosa*, full-face view (A), profile (B), and dorsal view (C) of super major worker (CASENT0649633) full-face view (D), profile (E), and dorsal view (F) of major worker (CASENT0649640) and full-face view (G), profile (H), and dorsal view (I) of minor worker (CASENT0649635).

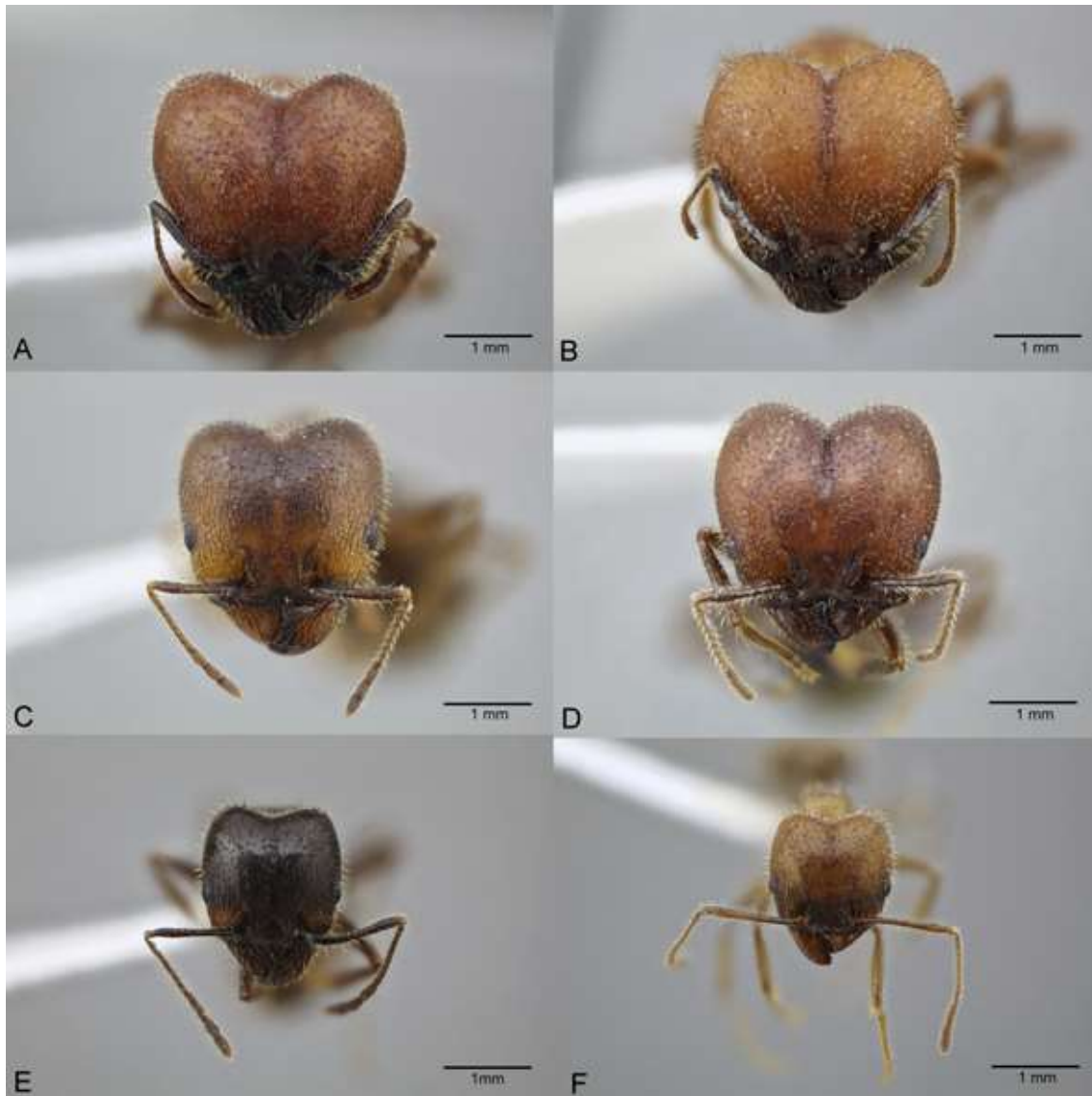


Figure 20. *Pheidole obtusospinosa*, full-face view of super major workers (A) (CASENT0649639), (B) (CASENT0649703), (C) (ICUAPFOR000023) and (D) (CASENT0649591) and full-face view of major workers (E) (CASENT0649640) and (F) (CASENT0649613). (A), (C) and (E) from the same nest in Zacatecas, (B), (C) and (F) from Puebla.



Figure 21. *Pheidole punctatissima*, full-face view (A), profile (C), and dorsal view (E) of major worker (CASENT0619681) and full-face view (B), profile (D), and dorsal view (F) of minor worker (CASENT0619442).





Figure 22. *Pheidole rima*, full-face view (A), profile (C), and dorsal view (E) of major worker (CASENT0633308) and full-face view (B), profile (D), and dorsal view (F) of minor worker (CASENT0633307).



Figure 23. *Pheidole roushae*, full-face view (A), profile (C), and dorsal view (E) of major worker (CASENT0610898) and full-face view (B), profile (D), and dorsal view (F) of minor worker (CASENT0610899).



Figure 24. *Pheidole skwarrae*, full-face view (A), profile (C), and dorsal view (E) of major worker (CASENT0649704) and full-face view (B), profile (D), and dorsal view (F) of minor worker (CASENT0649705).





Figure 25. *Pheidole soritis*, full-face view (A), profile (C), and dorsal view (E) of major worker (CASENT0104447) and full-face view (B), profile (D), and dorsal view (F) of minor worker (CASENT0104448).



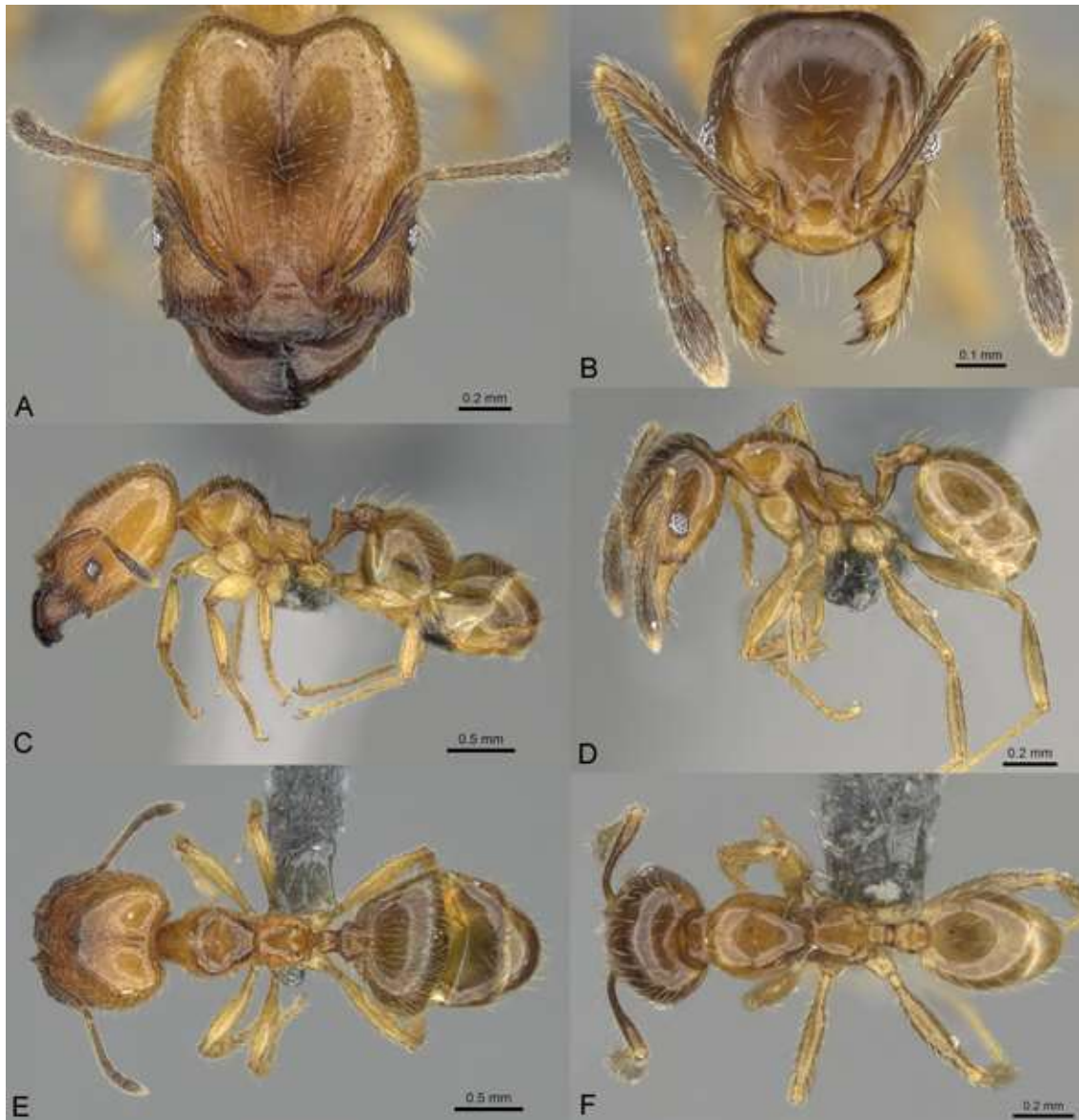


Figure 26. *Pheidole subarmata*, full-face view (A), profile (C), and dorsal view (E) of major worker (CASENT0768605) and full-face view (B), profile (D), and dorsal view (F) of minor worker (CASENT0768602).



Figure 27. *Pheidole susannae*, full-face view (A), profile (C), and dorsal view (E) of major worker (CASENT0178039) and full-face view (B), profile (D), and dorsal view (F) of minor worker (CASENT0178040).



Figure 28. *Pheidole tepicana*, full-face view (A), profile (B), and dorsal view (C) of super major worker (CASENT0649653) full-face view (D), profile (E), and dorsal view (F) of major worker (CASENT0649710) and full-face view (G), profile (H), and dorsal view (I) of minor worker (CASENT0649711).



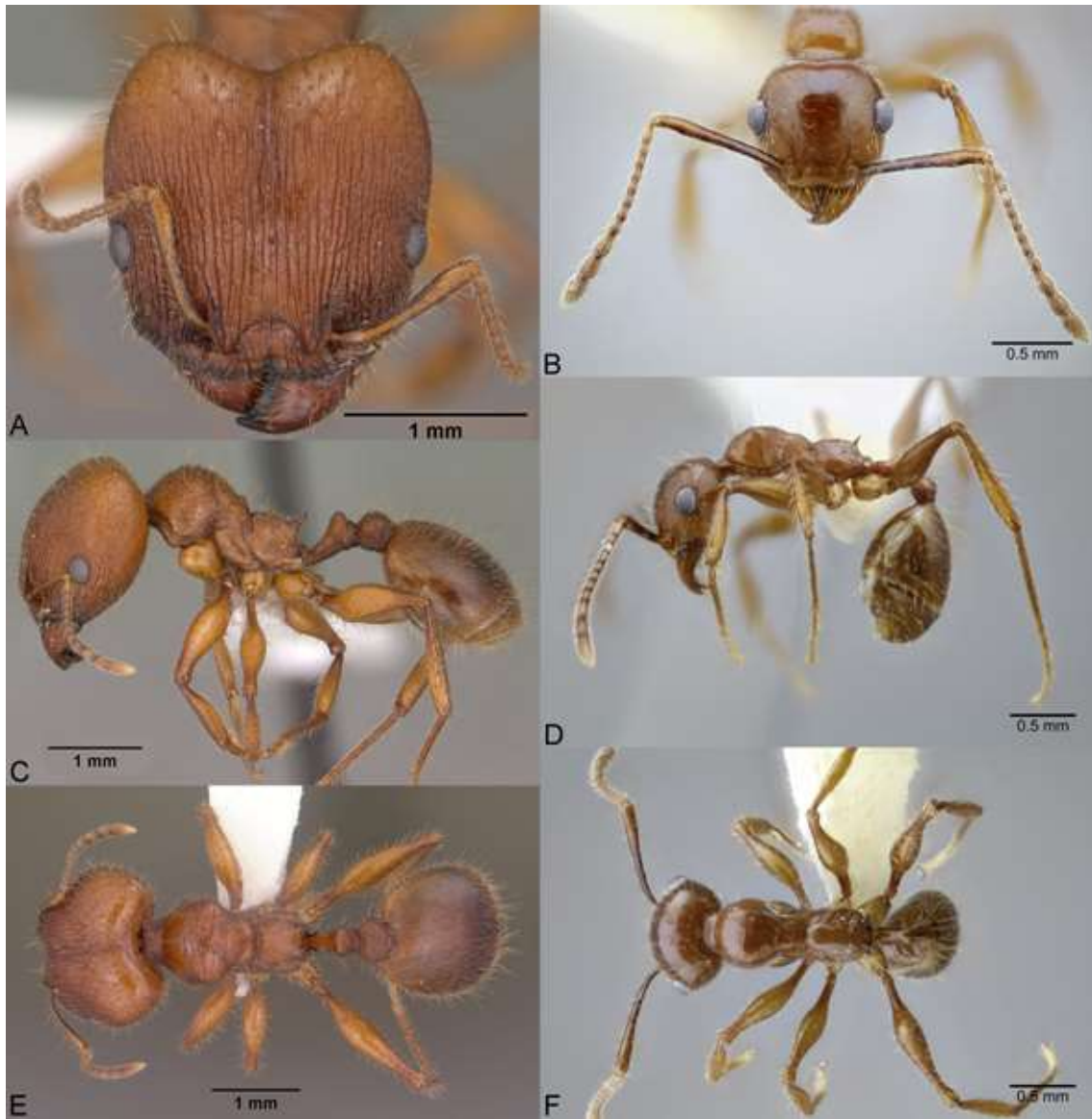


Figure 29. *Pheidole titanis*, full-face view (A), profile (C), and dorsal view (E) of major worker (CASENT0104449) and full-face view (B), profile (D), and dorsal view (F) of minor worker (CASENT0649712).



Figure 30. *Pheidole tolteca*, full-face view (A), profile (C), and dorsal view (E) of major worker (CASENT0649660) and full-face view (B), profile (D), and dorsal view (F) of minor worker (CASENT0649661).



Figure 31. *Pheidole tysoni*, full-face view (A), profile (C), and dorsal view (E) of major worker (CASENT0104426) and full-face view (B), profile (D), and dorsal view (F) of minor worker (CASENT0104427).





Figure 32. *Pheidole xyston*, full-face view (A), profile (C), and dorsal view (E) of major worker (CASENT0640897) and full-face view (B), profile (D), and dorsal view (F) of minor worker (CASENT0640900).



Figure 33. *Pheidole yucatana*, full-face view (A), profile (C), and dorsal view (E) of major worker (CASENT0649700) and full-face view (B), profile (D), and dorsal view (F) of minor worker (CASENT0649701).