

Figure 1. Collecting localities of 96 species of Asteraceae endemic to the Balsas Basin (orange) and Transmexican Volcanic Belt (blue).

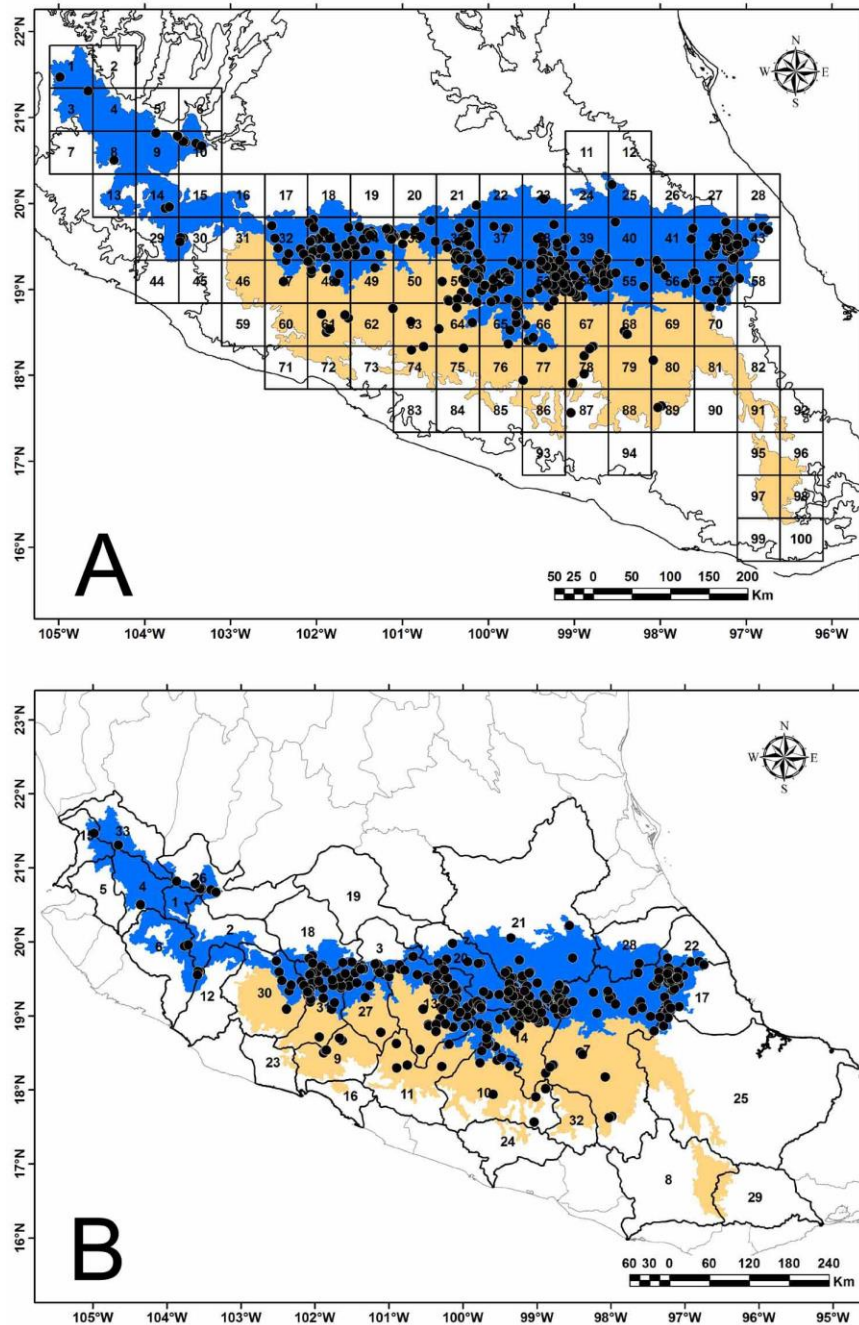


Figure 2. Areas of endemism identified in the biogeographic provinces Balsas Basin (BB) and Transmexican Volcanic Belt (TVB)

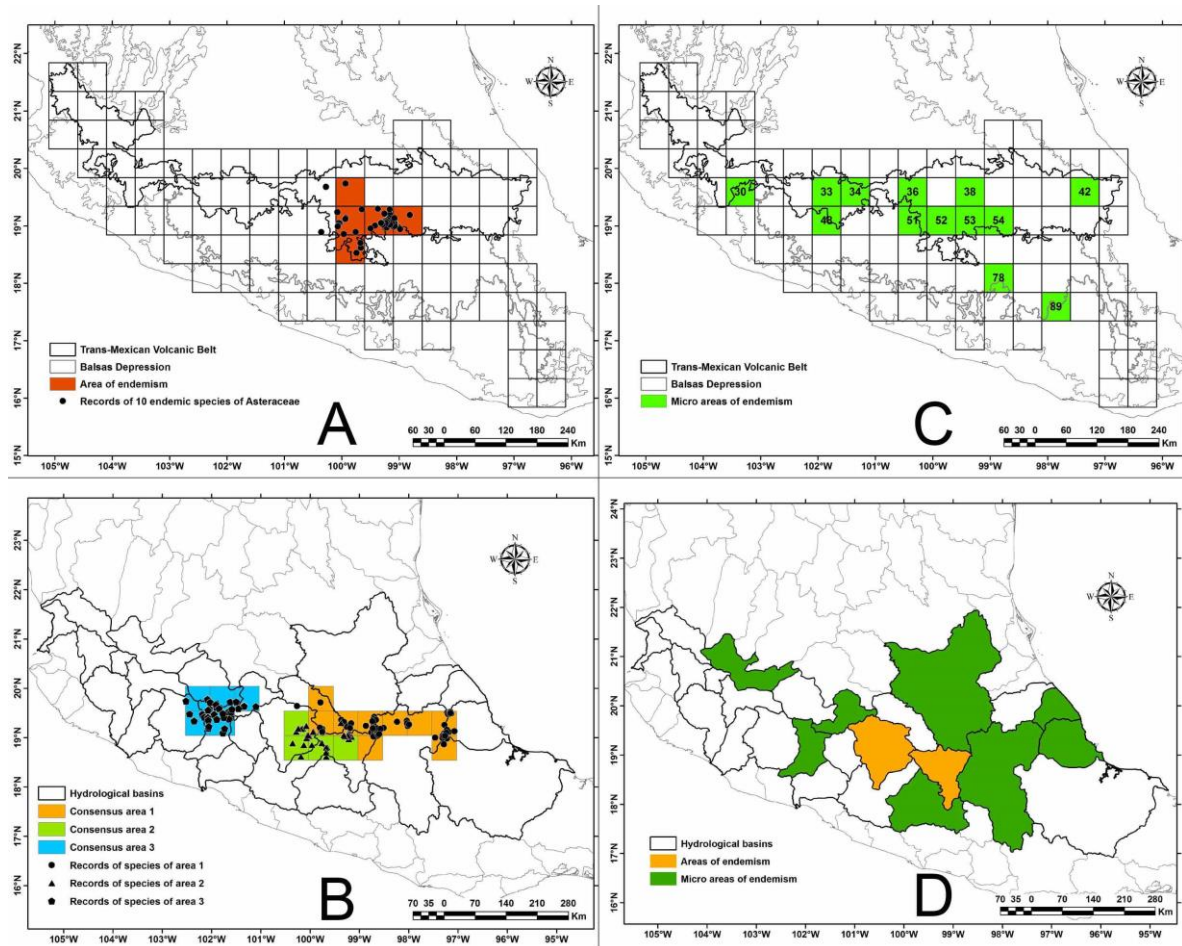


Figure 3. Cladograms obtained with the Parsimony Analysis of Endemicity (PAE).

