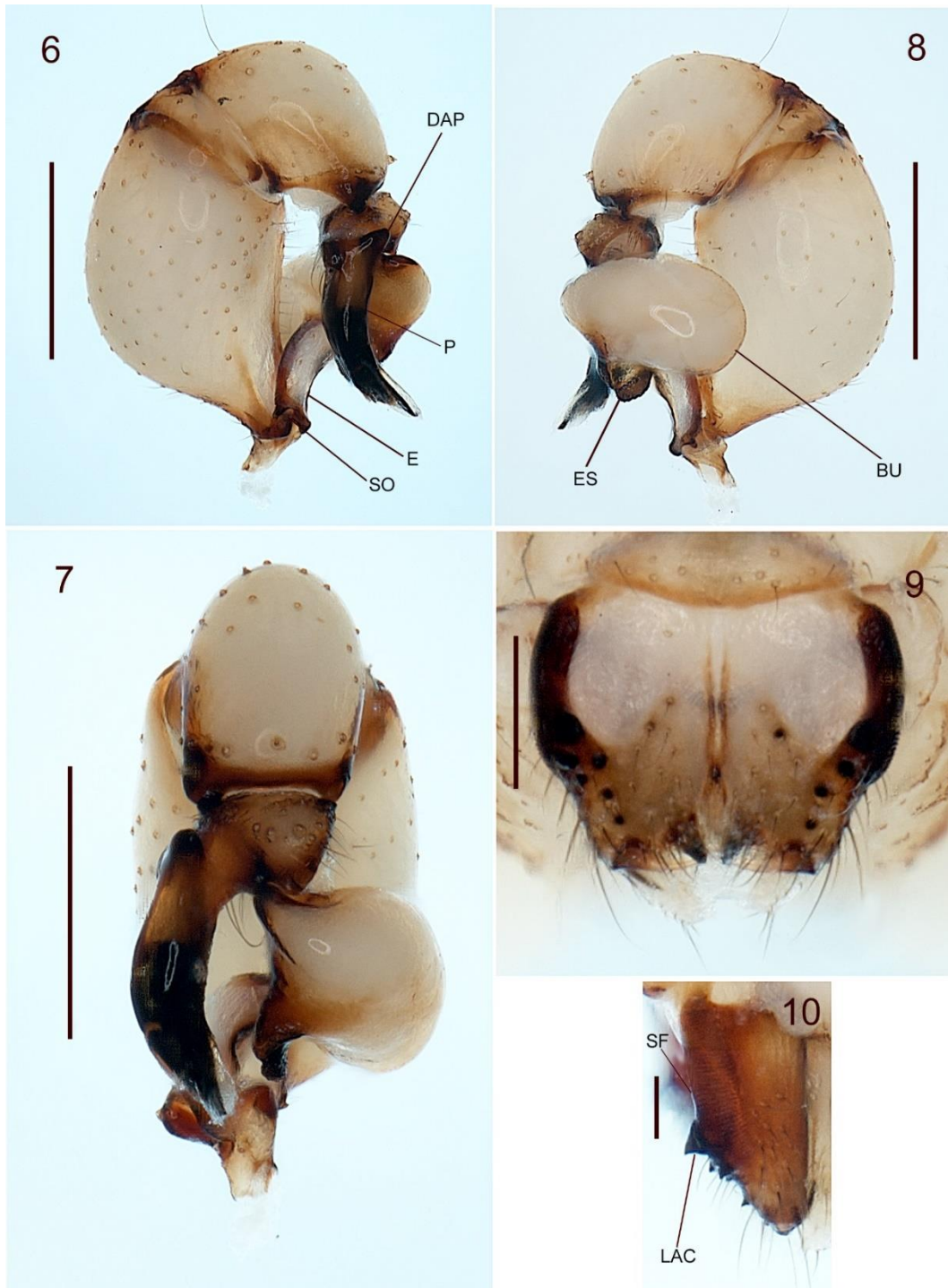
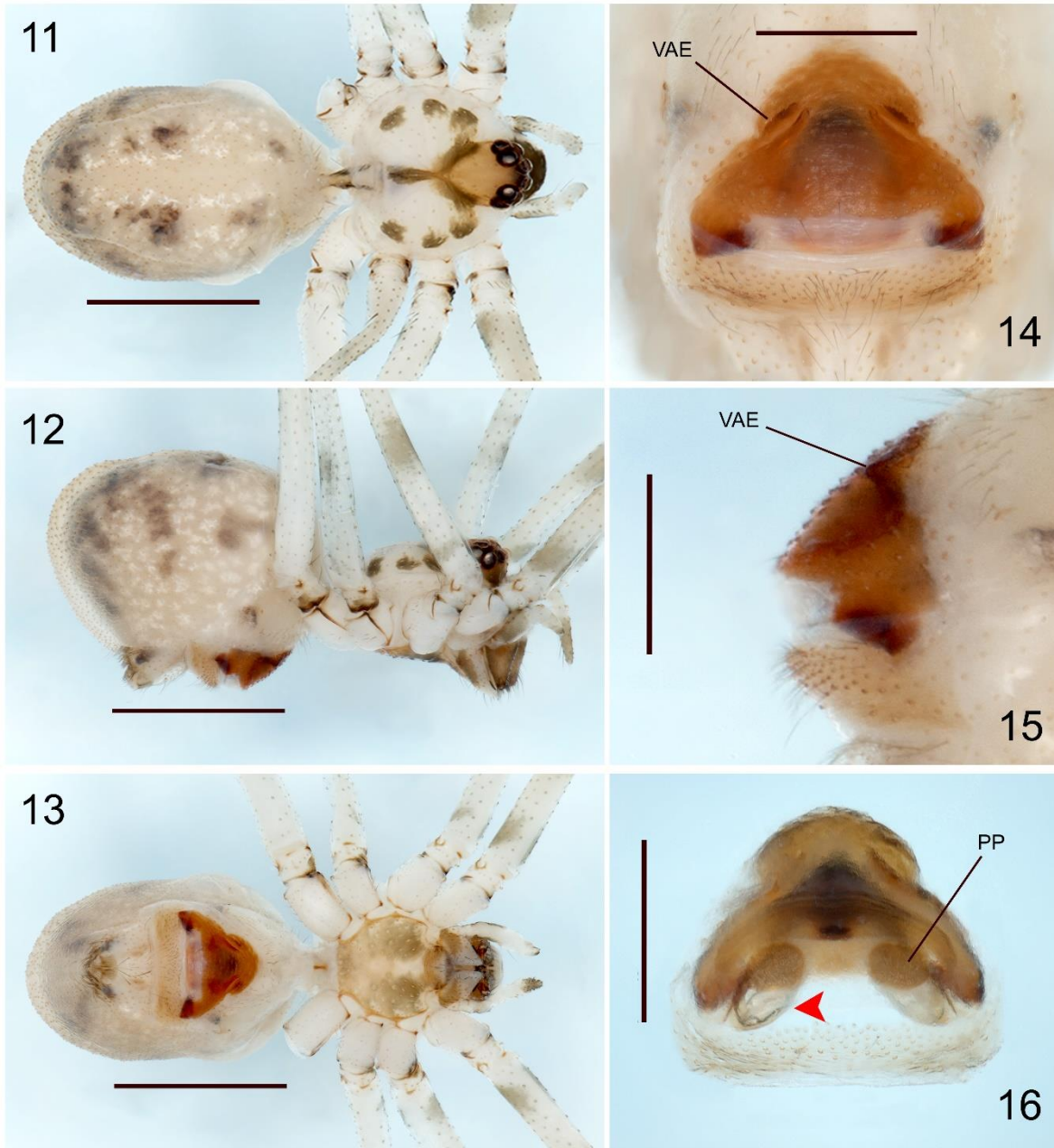


Figures 1–5. *Physocyclus xerophilus* sp. nov. Male (holotype): 1–3, Habitus, dorsal, lateral and ventral views, respectively. 4, Carapace and chelicerae, frontal view. 5, Bulb of male palp, dorsal ventral view. Scale bars: 0.2 mm (Fig. 5), 0.5 mm (Fig. 4) and 1 mm (Figs. 1–3).



Figures 6–10. *Physocyclus xerophilus* sp. nov. Male (holotype): 6–8, Right palp, retrolateral, ventral and prolateral views, respectively. 9, Chelicerae, frontal view. 10, Chelicerae, lateral view. Scale bars: 0.1 mm (Fig. 10), 0.2 mm (Fig. 9), 0.5 mm (Figs. 6–8). Abbreviations: DAP, dorsal apophysis of procurus; P, procurus; E, embolus; SO, spermatic operculum; ES, embolic esclerites; BU, bulb of palp; SF, stridulatory files; LAC, lateral apophysis of chelicerae.



Figures 11–16. *Physocyclus xerophilus* sp. nov. Female (paratype): 11–13, Habitus, dorsal, lateral and ventral views, respectively. 14–16, Epigynum, ventral, lateral and dorsal views, respectively (arrow indicates the bag-shaped structures below the pore plates). Scale bars: 0.5 mm (Figs. 14–16), 1 mm (Figs. 11–13). Abbreviations: VAE, ventral apophysis of epigynum; PP, pore plates.



Figures 17–18. Habitat and microhabitat of *Physocyclus xerophilus*, **sp. nov.** 17, Xerophilous scrub close to the beach El Requesón (type locality), from Baja California Sur, Mexico. 18, Rocks on the floor where the specimens of the new species can be collected (arrows indicate the specific microhabitat).

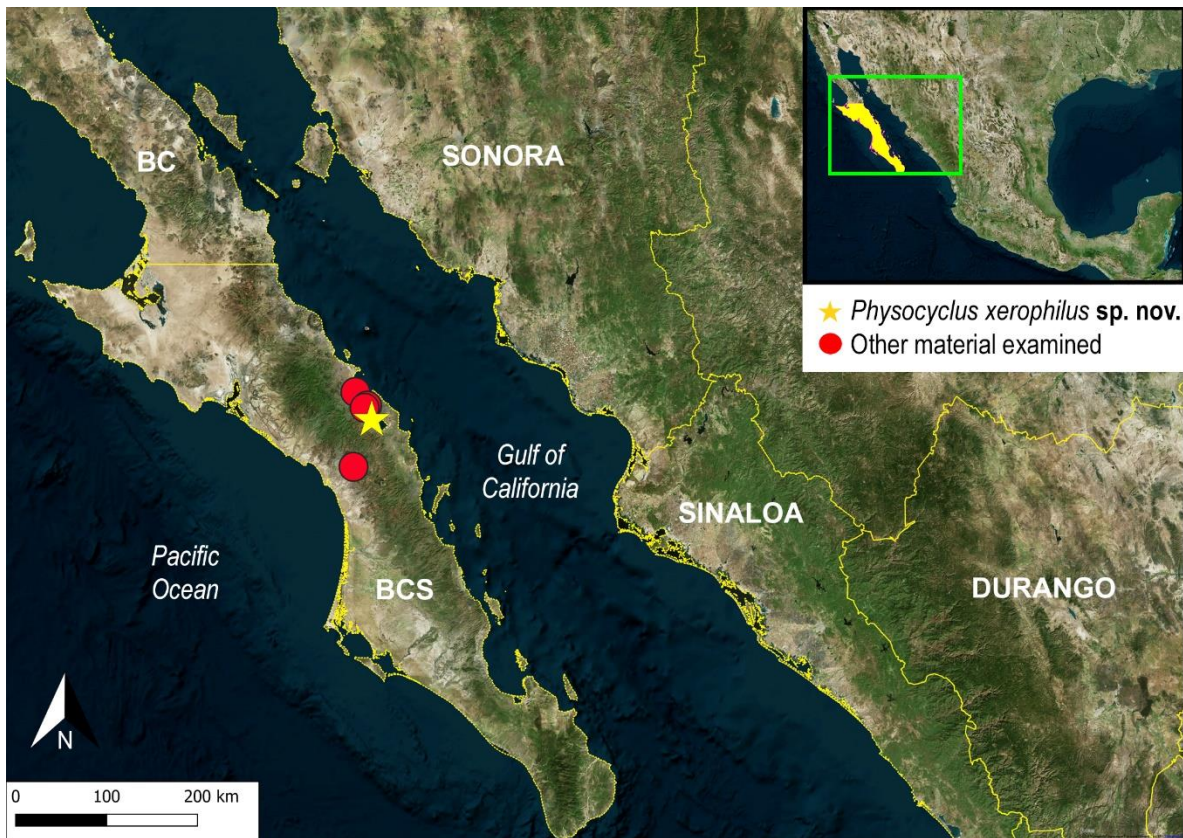


Figure 19. Known records of *Physocyclus xerophilus* sp. nov., from Baja California Sur (BCS), Mexico. Star (type locality). Abbreviation: BC, Baja California.