

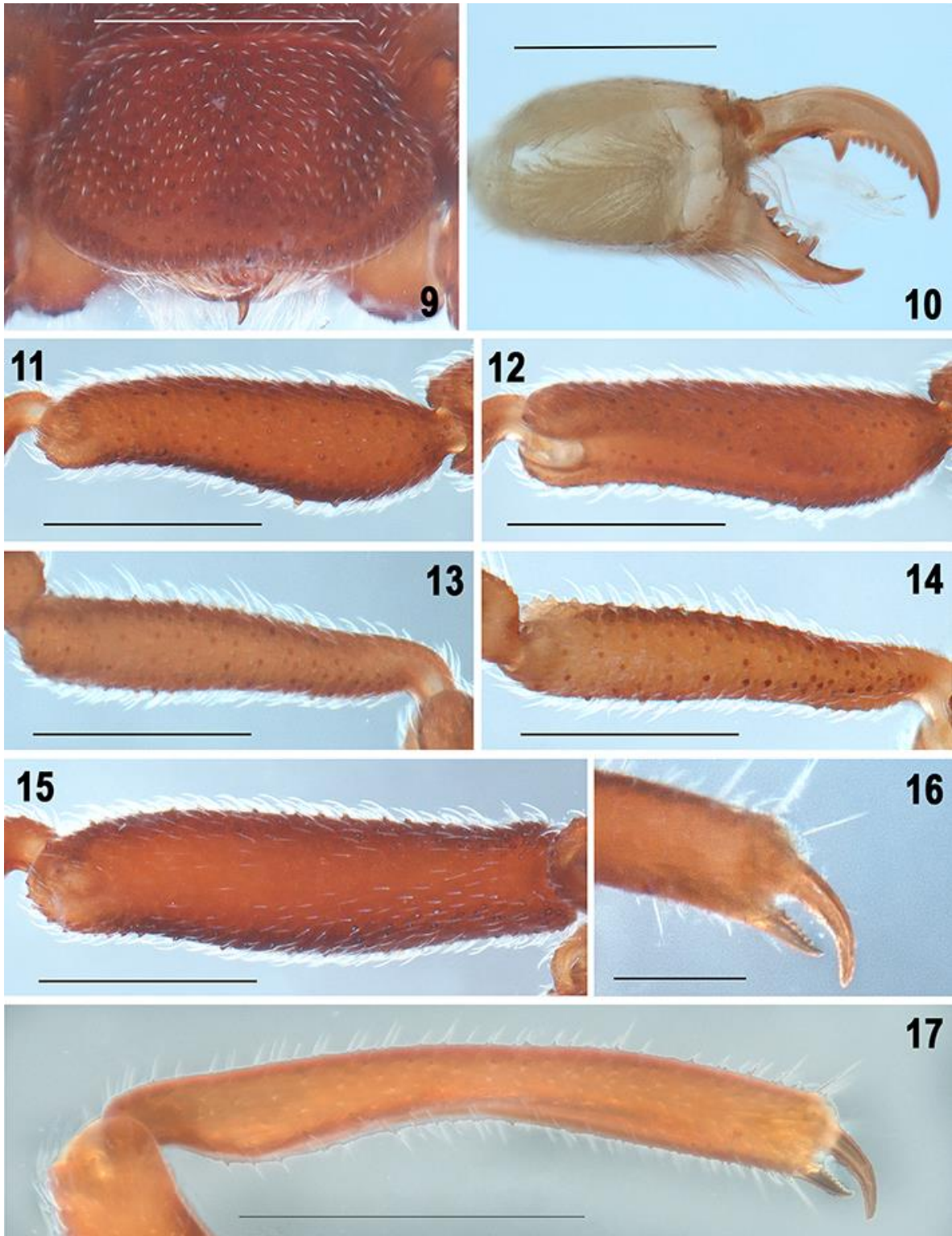


Figures 1–4. *Pseudocellus franckei* sp. nov. Male holotype: 1–2. Habitus, dorsal and ventral views, respectively. 3. Carapace, dorsal view. 4. Prosoma, ventral view, showing coxosternal region. Scale bars: 0.5 mm (Figs. 3–4), 2 mm (Figs. 1, 2).

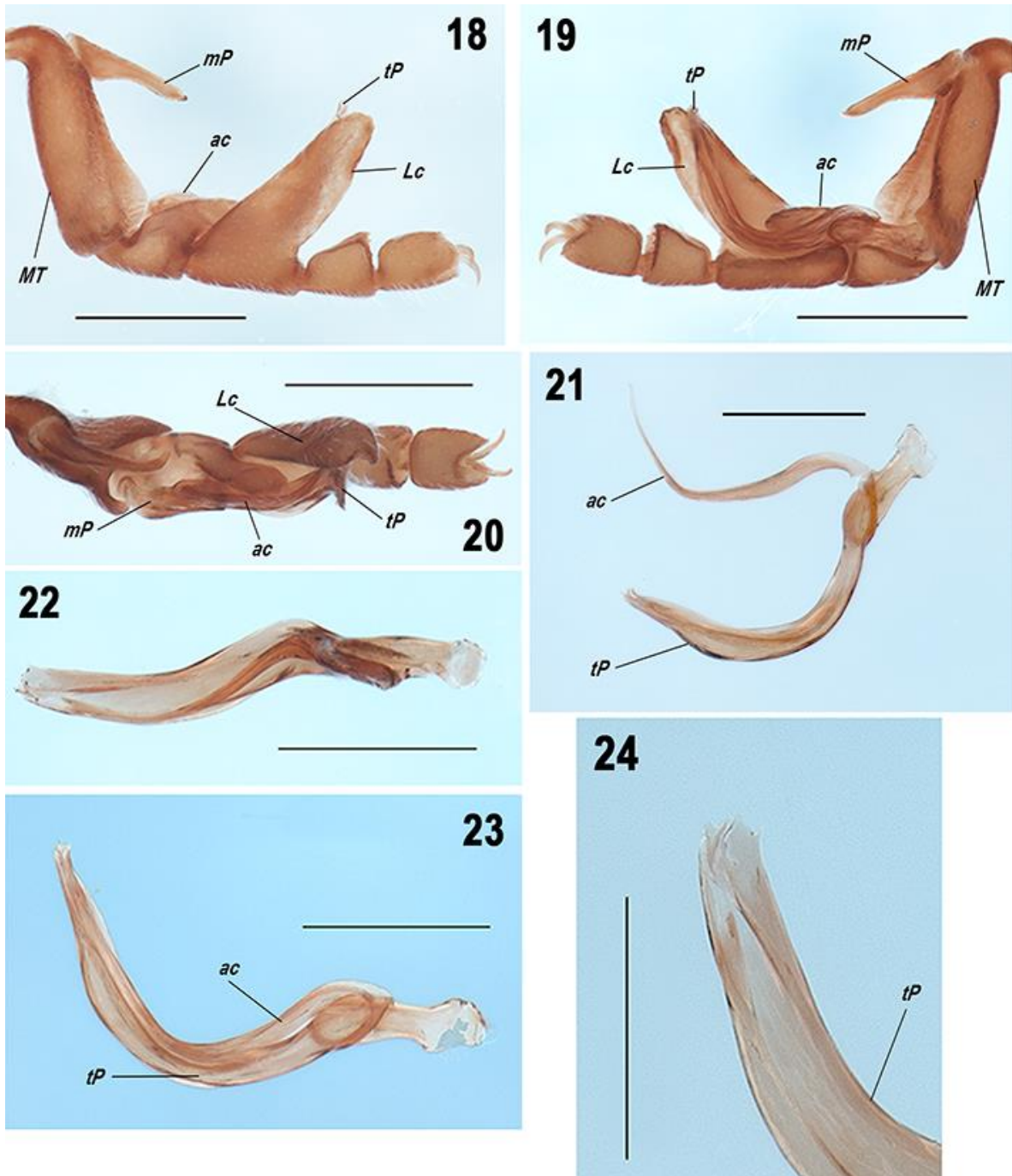


Figures 5–8. *Pseudocellus franckei* sp. nov. Male holotype: 5–6. Opisthosoma, dorsal and ventral views, respectively. 7. Tergite XII, median plate (arrow indicates the depression). 8. Pygidium, posterior view. Scale bars: 0.2 mm (Fig. 8), 0.5 mm (Fig. 7), 1 mm (Figs. 5, 6).



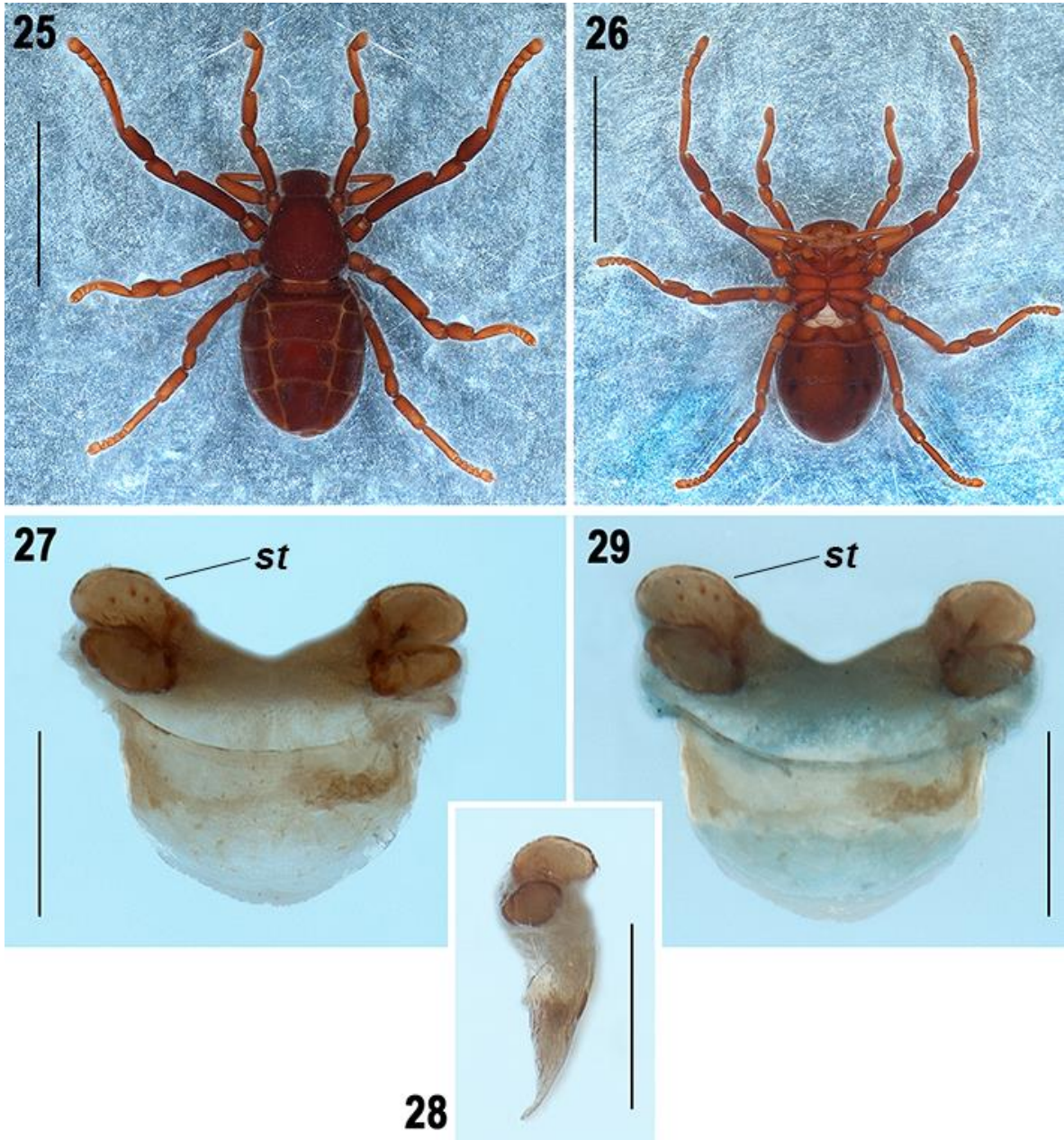


Figures 9–17. *Pseudocellus franckei* sp. nov. Male holotype: 9. Cucullus, dorsal view. 10. Left chelicerae, dorsal view. 11–12. Right tibia II, prolateral and proventral views. 13–14. Right metatarsus II, prolateral and proventral views. 15. Right femur II, prolateral view. 16. Detail of the movable and fixed claws of right pedipalp, retrolateral view. 17. Right pedipalp tibia, retrolateral view. Scale bars: 0.1 mm (Fig. 16), 0.2 mm (Fig. 10), 0.5 mm (Figs. 9, 11–15, 17).

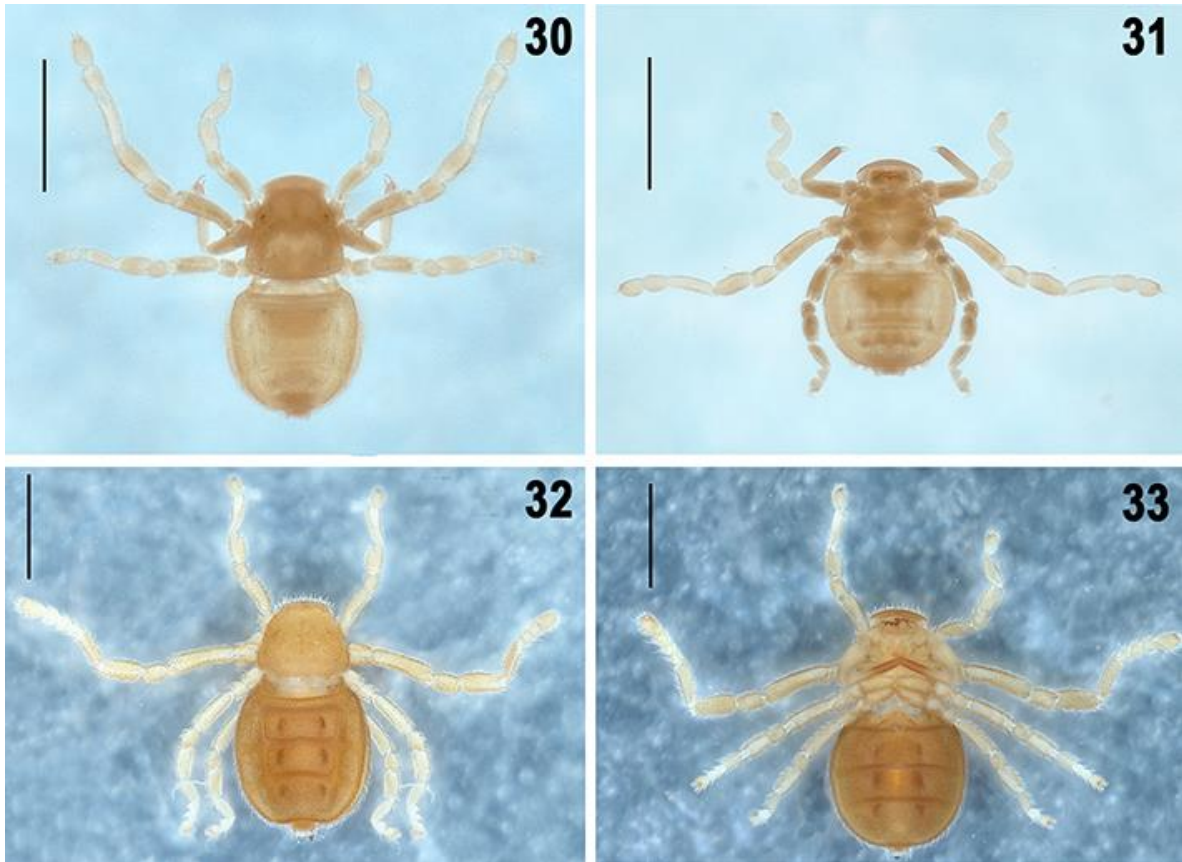


Figures 18–24. *Pseudocellus franckei* sp. nov. Male holotype: 18–20. Right leg III (copulatory apparatus), retrolateral, prolateral and dorsal views. 21. Copulatory apparatus extended, prolateral view. 22. Copulatory apparatus, dorsal view. 23. Copulatory apparatus, prolateral view. 24. Tarsal process, distal half, retrodorsal view. Scale bars: 0.1 mm (Fig. 24), 0.2 mm (Figs. 21–23), 0.5 mm (Figs. 18–20).



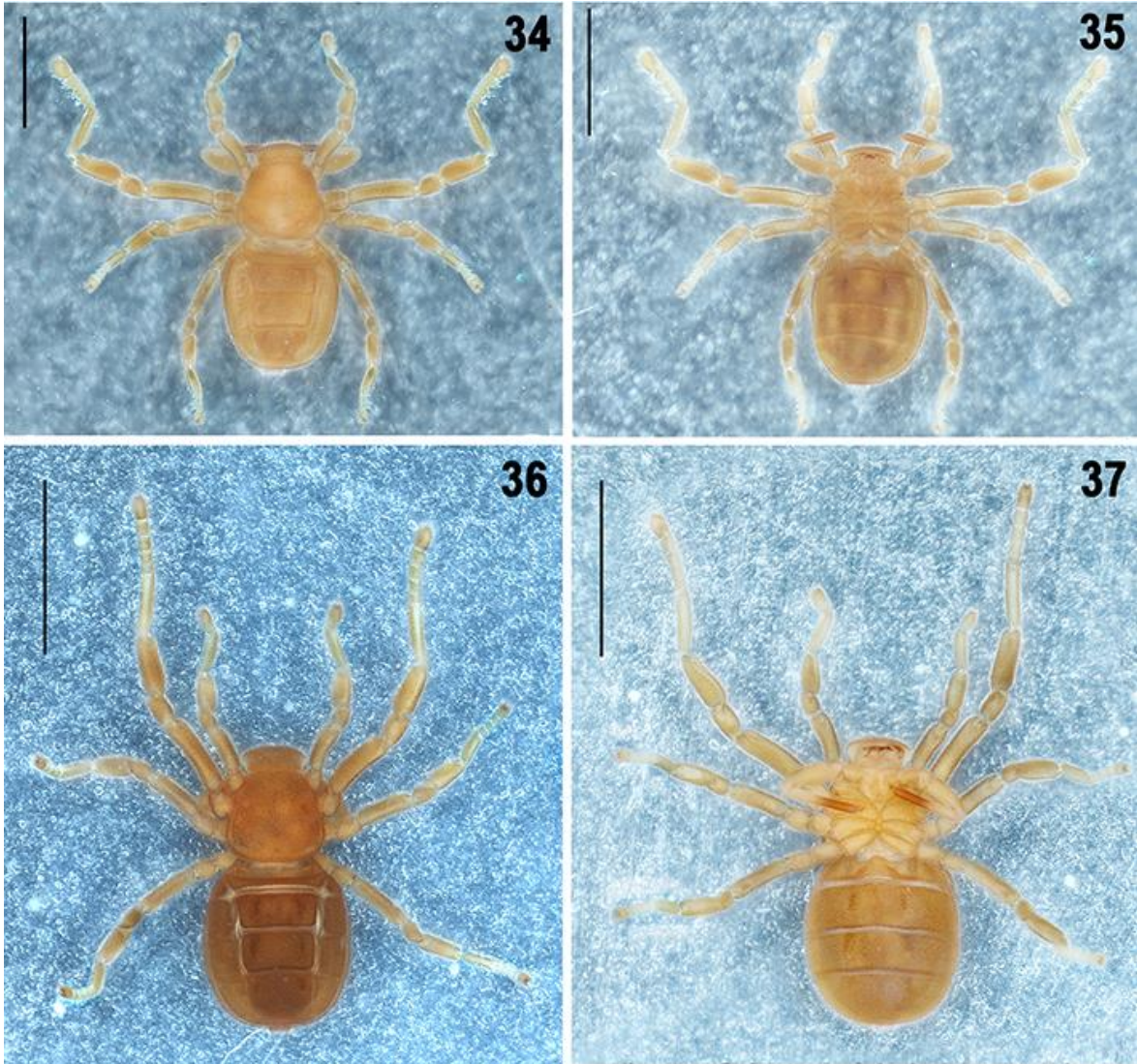


Figures 25–29. *Pseudocellus franckei* sp. nov. Female paratype: 25–26. Habitus, dorsal and ventral views. 27–28. Spermathecae, anterior and lateral views, respectively. 29. Spermathecae stained, anterior view. Scale bars: 0.2 mm (Figs. 27–29), 2 mm (Figs. 25–26).



Figures 30–33. *Pseudocellus franckei* sp. nov. Larva: 30–31. Habitus, dorsal and ventral views. Protonymph: 32–33. Habitus, dorsal and ventral views. Scale bars: 2 mm.





Figures 34–37. *Pseudocellus franckei* sp. nov. Deutonymph: 34–35. Habitus, dorsal and ventral views. Tritonymph: 36–37. Habitus, dorsal and ventral views. Scale bars: 2 mm.

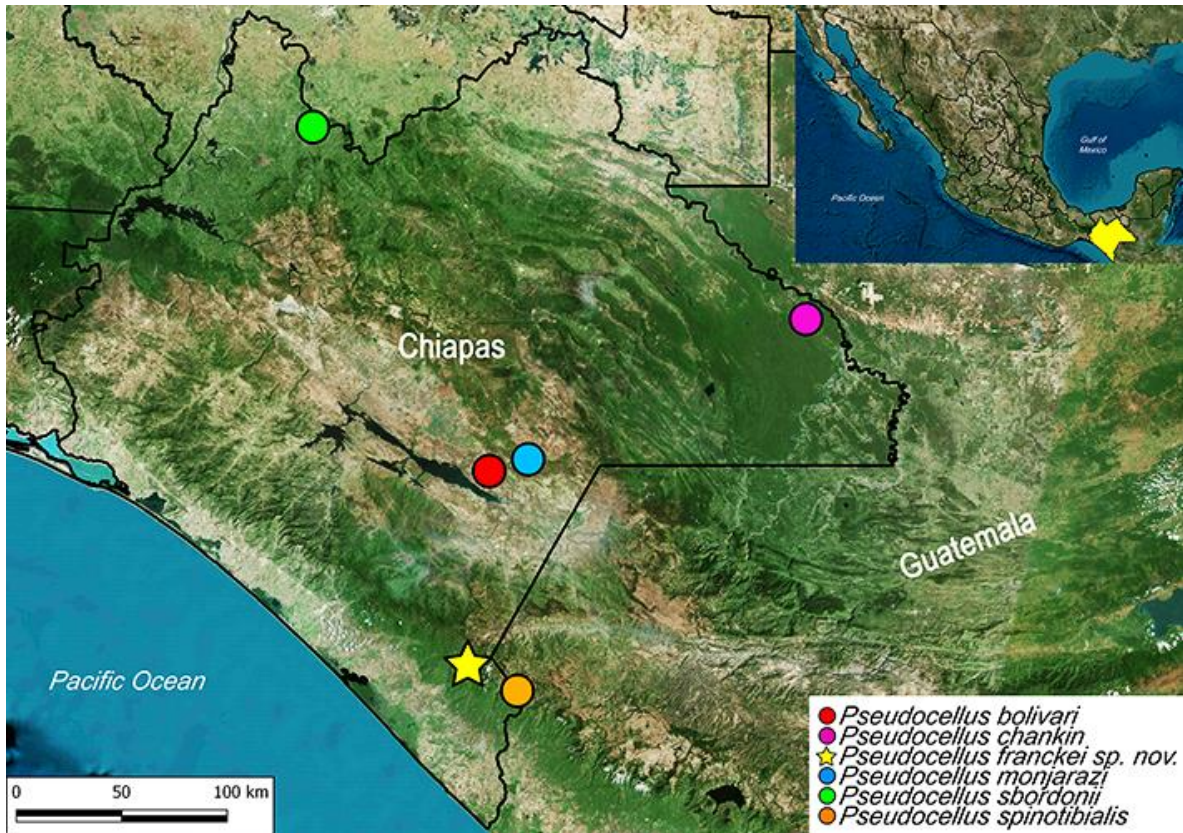


Figure 38. Species of the genus *Pseudocellus* described from Chiapas, Mexico; including the new species described herein: *Pseudocellus franckei* sp. nov. (star).