

Figure 1

Phylogeography of *D. fuliginosa* and *X. minutus*. Left, phylogenetic reconstruction of the mtDNA (ND2) data set. Right, and allele network of the nDNA (Locus 20454). The map depicts the range of each major haplogroup (same color), and elevations above 1500 m are in dark grey. Circles represent localities of the samples, and their sizes are proportional to sample size.

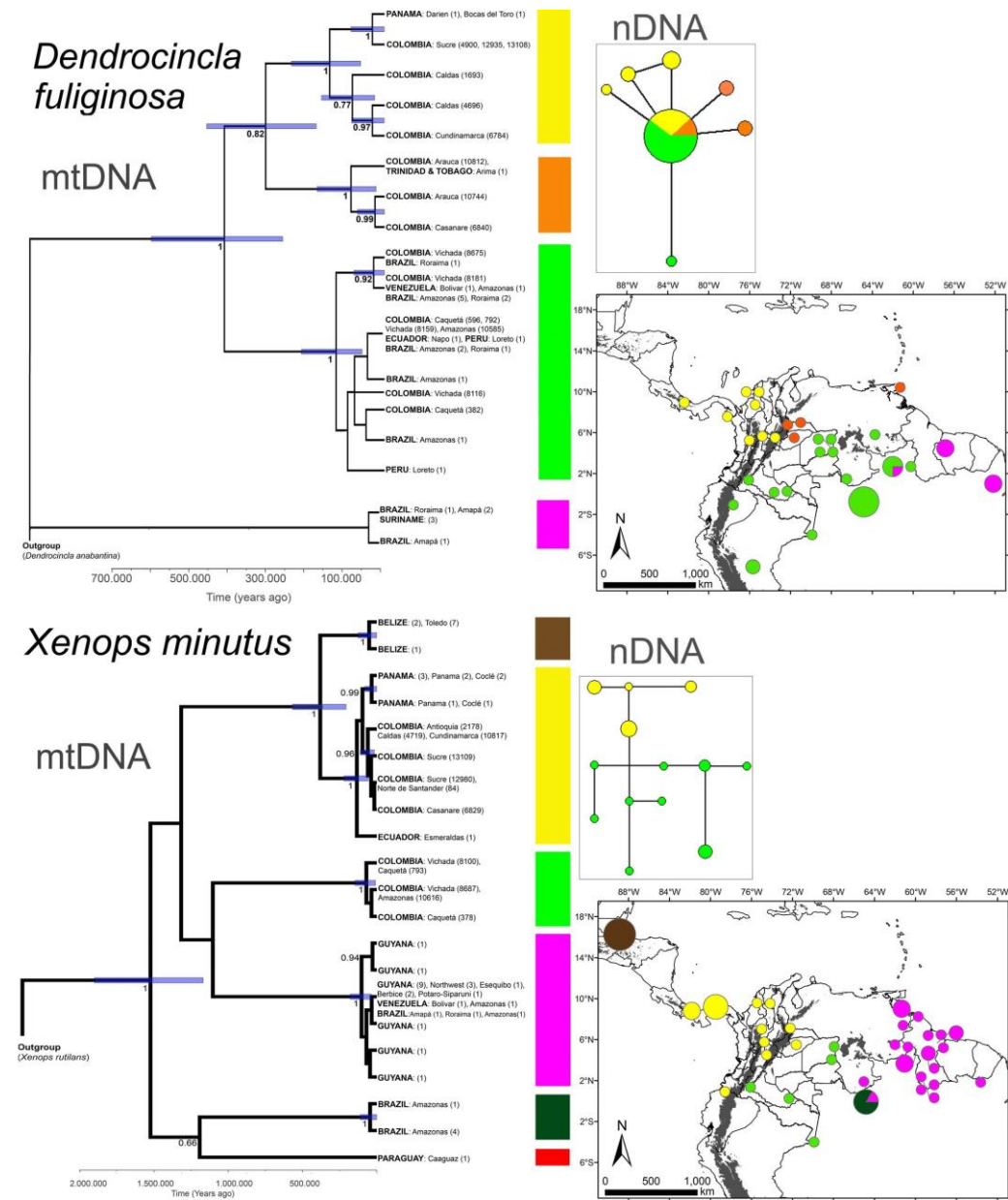


Figure 2

Scatter plot of a PCA including morphometric measurements of the Colombian individuals of *D. fuliginosa* and *X. minutus* housed at IAvH-A. Each major phylogeographic group defined by the mtDNA analysis is represented with a different symbol (that is the reason because there are three groups for *D. fuliginosa* and two for *X. minutus*)

