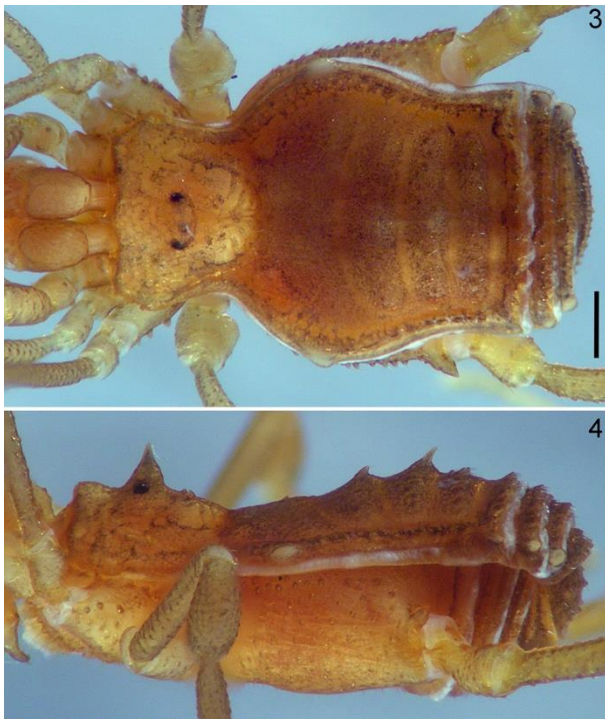




Figure 1. Habitus in dorsal view of the holotype of *Potosa el santo* sp. nov. Scale bar: 0.5 mm.



Figure 2. Habitus in lateral view of the holotype of *Potosa el santo* sp. nov. Scale bar: 0.5 mm.



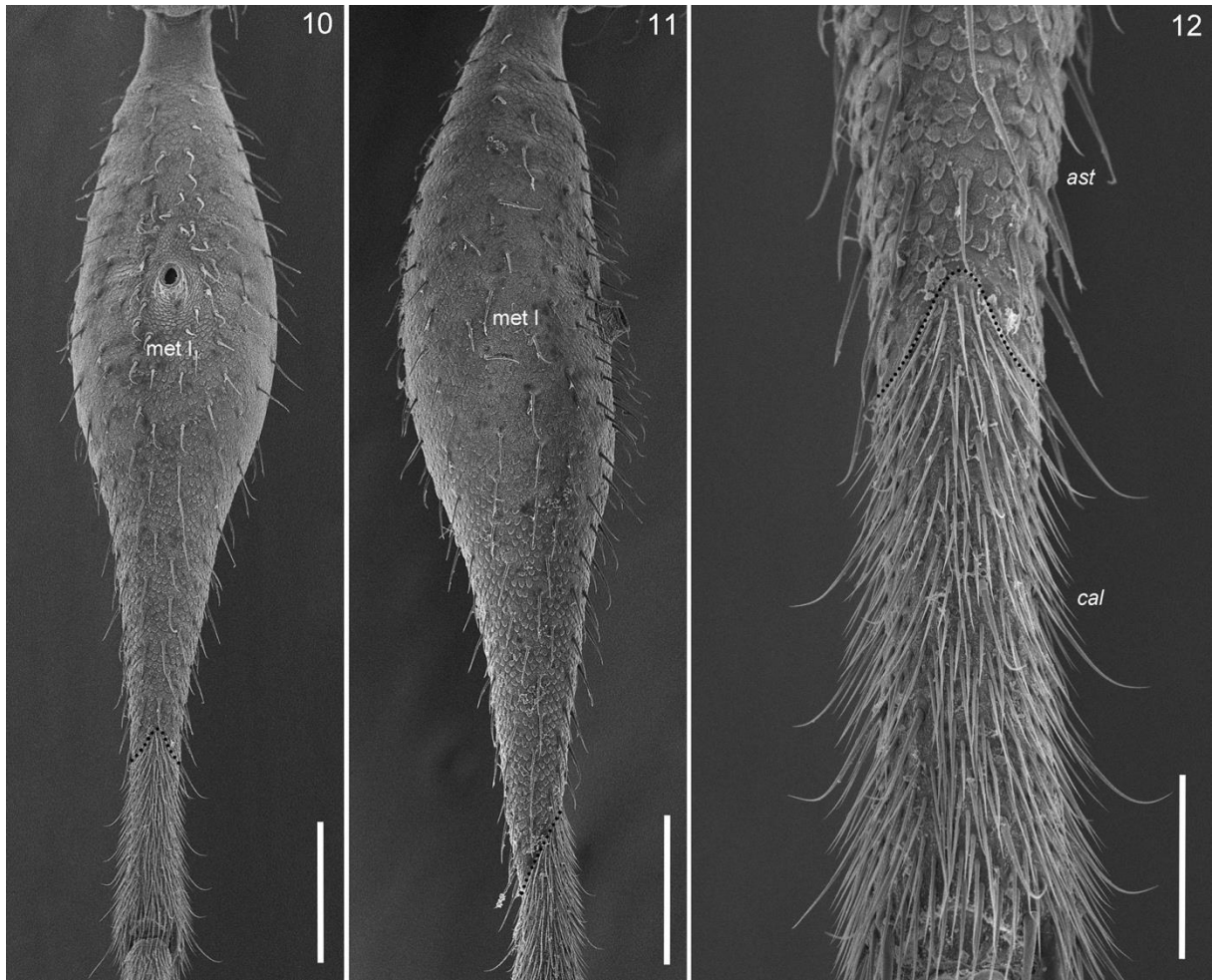
Figures 3 and 4. Scutum of holotype of *Potosa el santo* sp. nov., 3, dorsal view. 4, lateral view.

Scale bar: 0.5 mm.



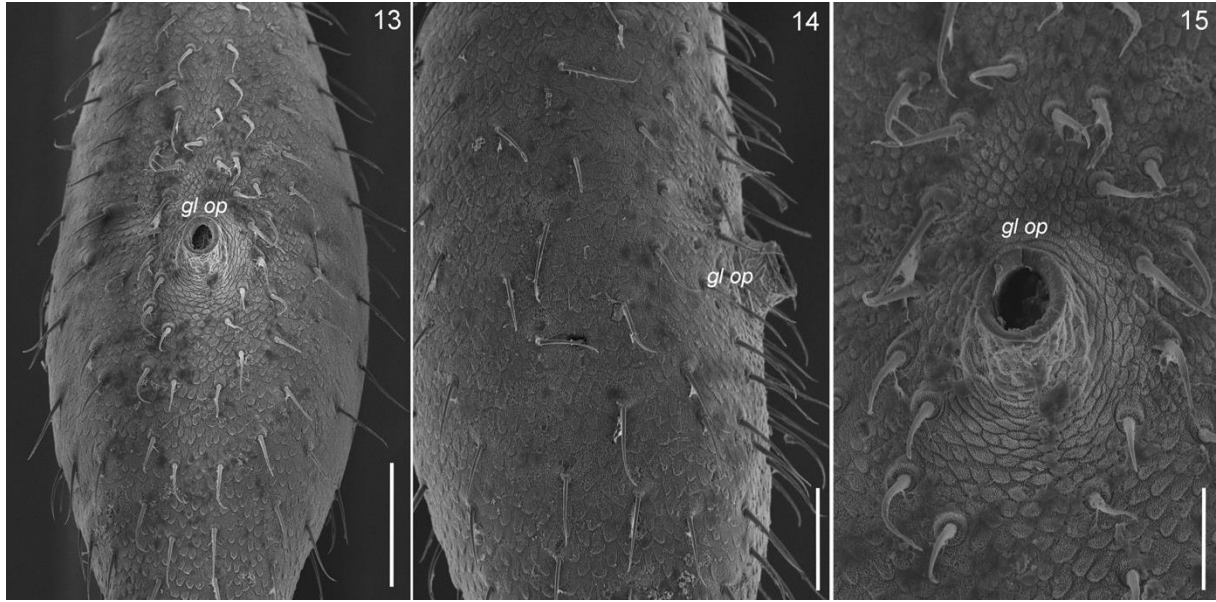
Figures 5 – 9. 5 – 7, lateral view of legs I, II and IV of the holotype of *Potosa el santo* sp. nov. 8 and 9, lateral view of legs II and IV of *P. dybasi*. Abbreviations: met I = metatarsus I; *dis I, II and III* = distitarsus I, II and III; met IV = metatarsus IV.



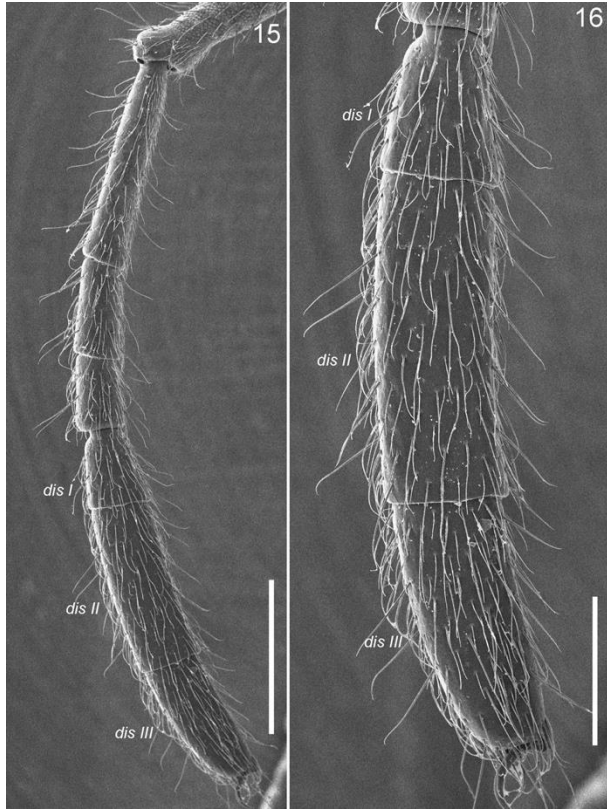


Figures 10 – 12. Metatarsus I of the *Potosa el santo* sp. nov. (DNA voucher CNANOp0089). 10 and 11, ventral and lateral view. 12, detail of limit between astragalus and calcaneus.

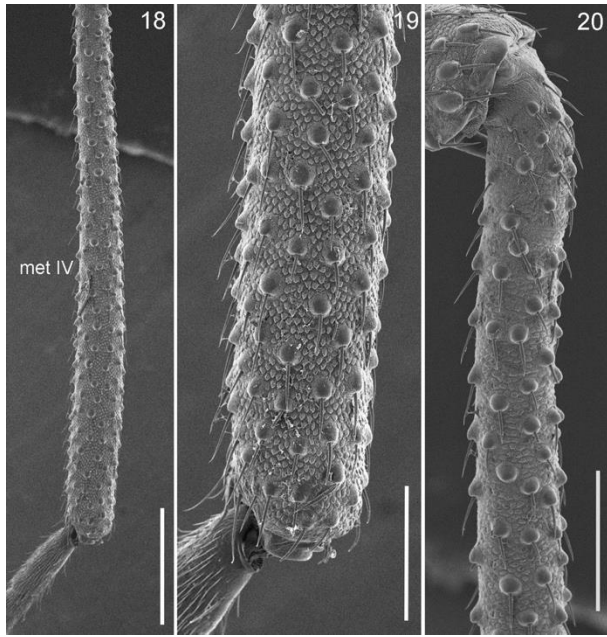
Abbreviations: met I = metatarsus I; *ast* = astragalus; *cal* = calcaneus. Scale bars: 10 and 11 = 250  $\mu\text{m}$ , 12 = 100  $\mu\text{m}$ .



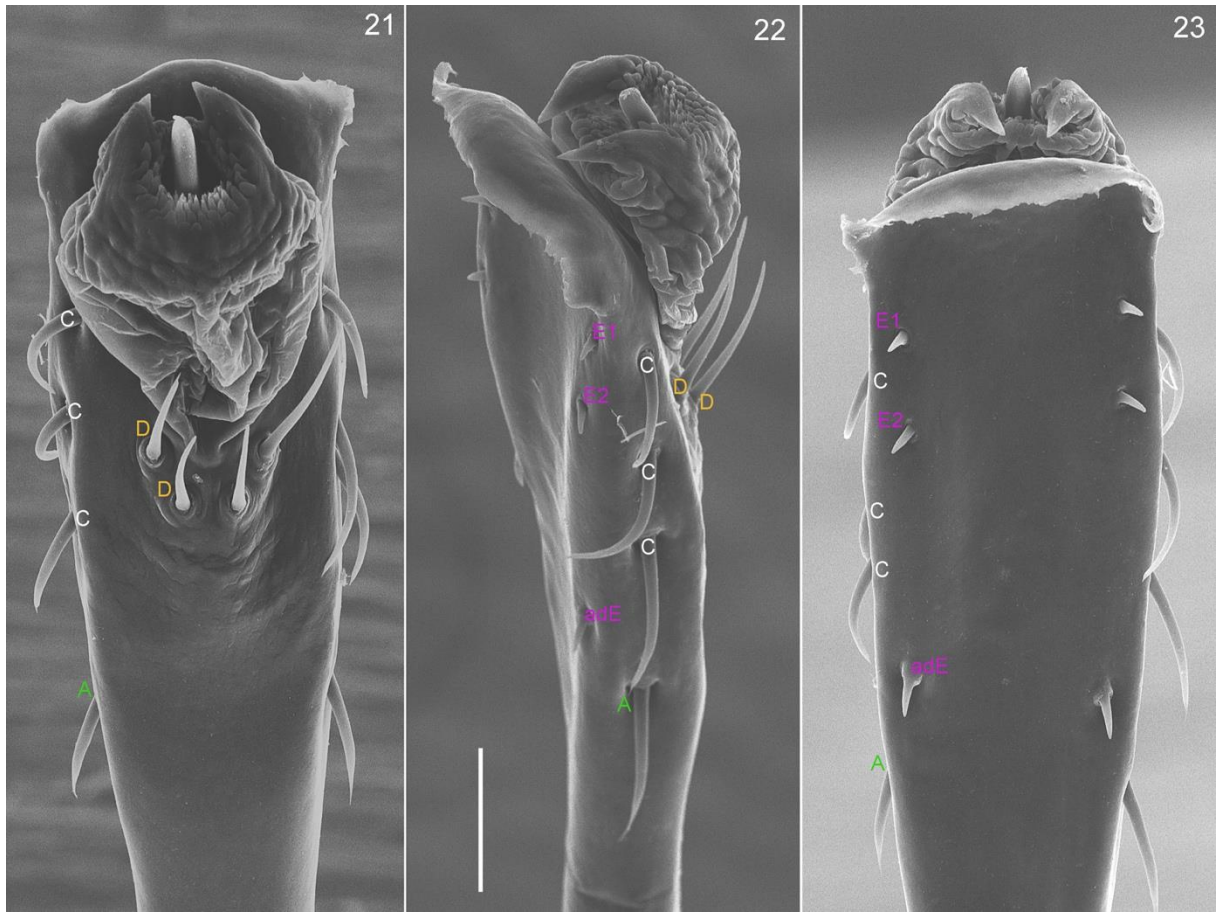
Figures 13 – 15. Detail of ventral glandular opening on metatarsus I in male of *Potosa elsanto* sp. nov. (DNA voucher CNANOp0089). 13, 14 and 15, ventral, lateral and close-up of glandular opening. Abbreviations: *gl op* = glandular opening. Scale bars: 13 = 150  $\mu\text{m}$ , 14 = 100  $\mu\text{m}$ , 15 = 50  $\mu\text{m}$ .



Figures 16 and 17. Lateral view of tarsus II of the male of *Potosa elsanto* sp. nov. (DNA voucher CNANOp0089). 16, complete tarsus. 17, distitarsus. Abbreviations: *dis I, II, III* = distitarsus I, II and III. Scale bars: 16 = 500  $\mu\text{m}$ , 17 = 250  $\mu\text{m}$ .



Figures 18 – 20. Lateral view of metatarsus IV of the male of *Potosa elsanto* sp. nov. (DNA voucher CNANOp0089). 18, entire metatarsus. 19, apical portion of metatarsus. 20, basal portion of metatarsus. Abbreviations: met IV = metatarsus IV. Scale bars: 18 = 500  $\mu\text{m}$ , 19 = 200  $\mu\text{m}$ , 20 = 250  $\mu\text{m}$ .



Figures 21 – 23. Male genitalia of *Potosa elsanto* sp. nov. (DNA voucher CNANOp0089). 21, dorsal view. 22, lateral view. 23, ventral view. Abbreviations indicate setal groups, using the same color as Kury and Villarreal (2015), for easy recognition. Scale bar: 50  $\mu$ m.

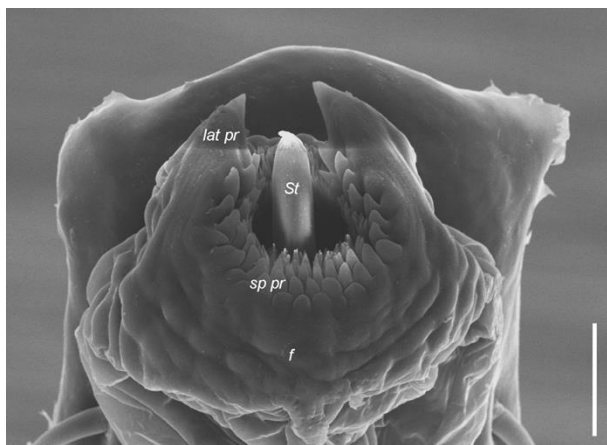




Fig. 24. Detail of apical follis of *Potosa el santo* sp. nov. (DNA voucher CNANOp0089).

Abbreviations: *f* = follis; *lat pr* = lateral projections; *sp pr* = spiniform projections; *St* = stylus.

Scale bar: 25  $\mu$ m.