

Figure 1. Agave fruit (bolls) with small holes and necrotic areas (A & B). The infested bolls yielded *Enoclerus zonatus* larvae (C & D). Pupal chamber of *E. zonatus* in base of boll (E). Damage to agave seeds presumably by seed feeding weevils (F).

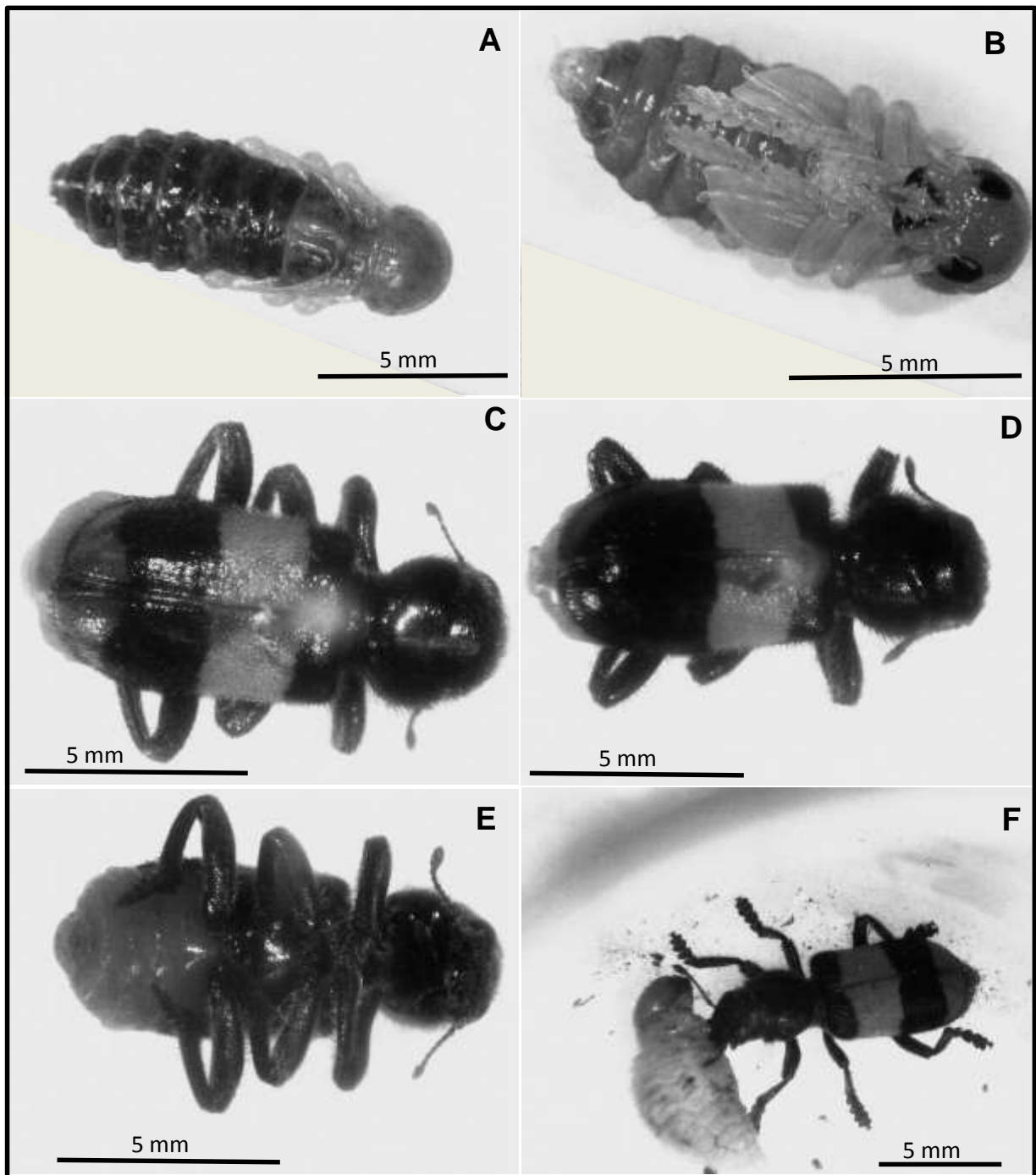


Figure 2. *Enoclerus zonatus*: pupa dorsal view (A); pupa ventral view (B); adult dorsal habitus (C & D); adult ventral view (E); adult feeding on larva of *Scyphophorus acupunctatus* in the laboratory (F).

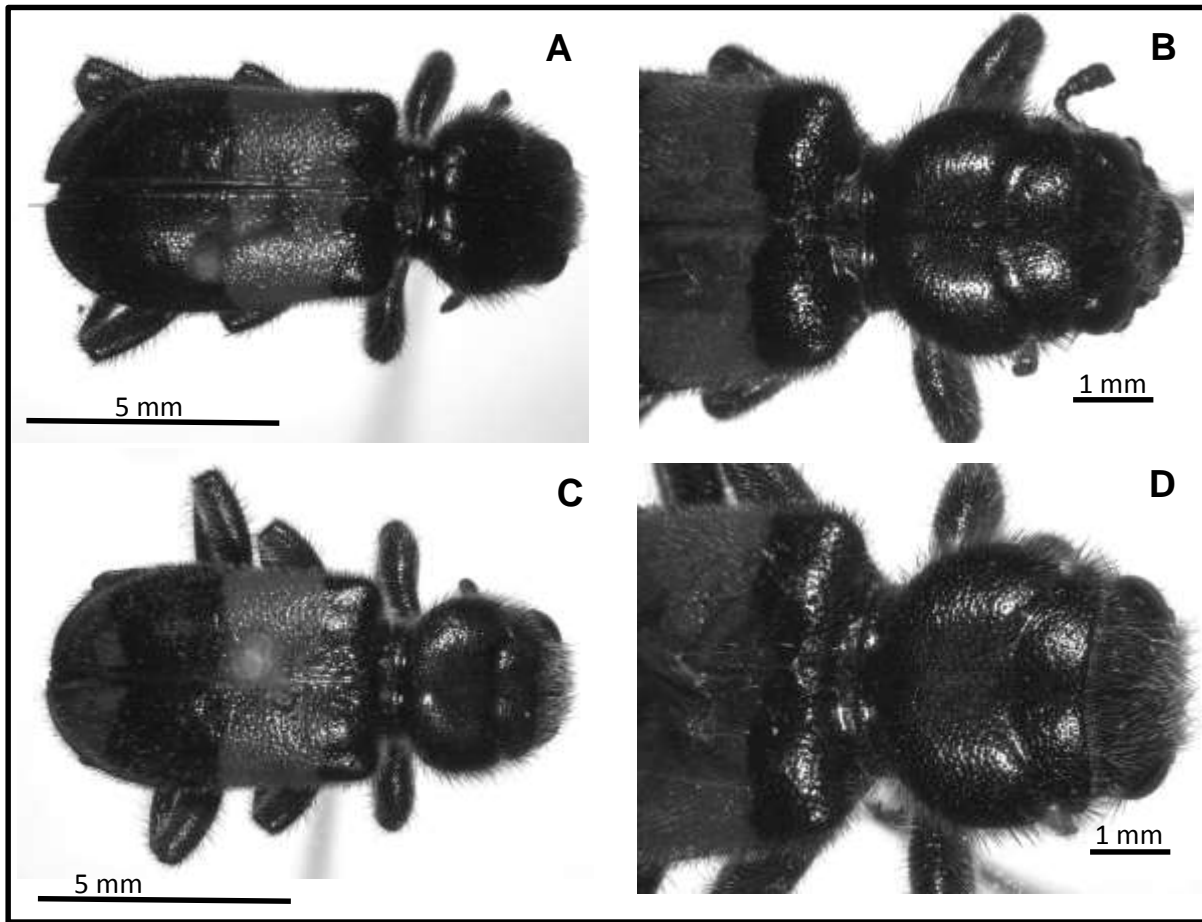


Figure 3. *Enoclerus zonatus*: specimen with single antemedian red fascia (A & B); specimen with antemedian and posterior red fasciae (more common morph) (C & D).