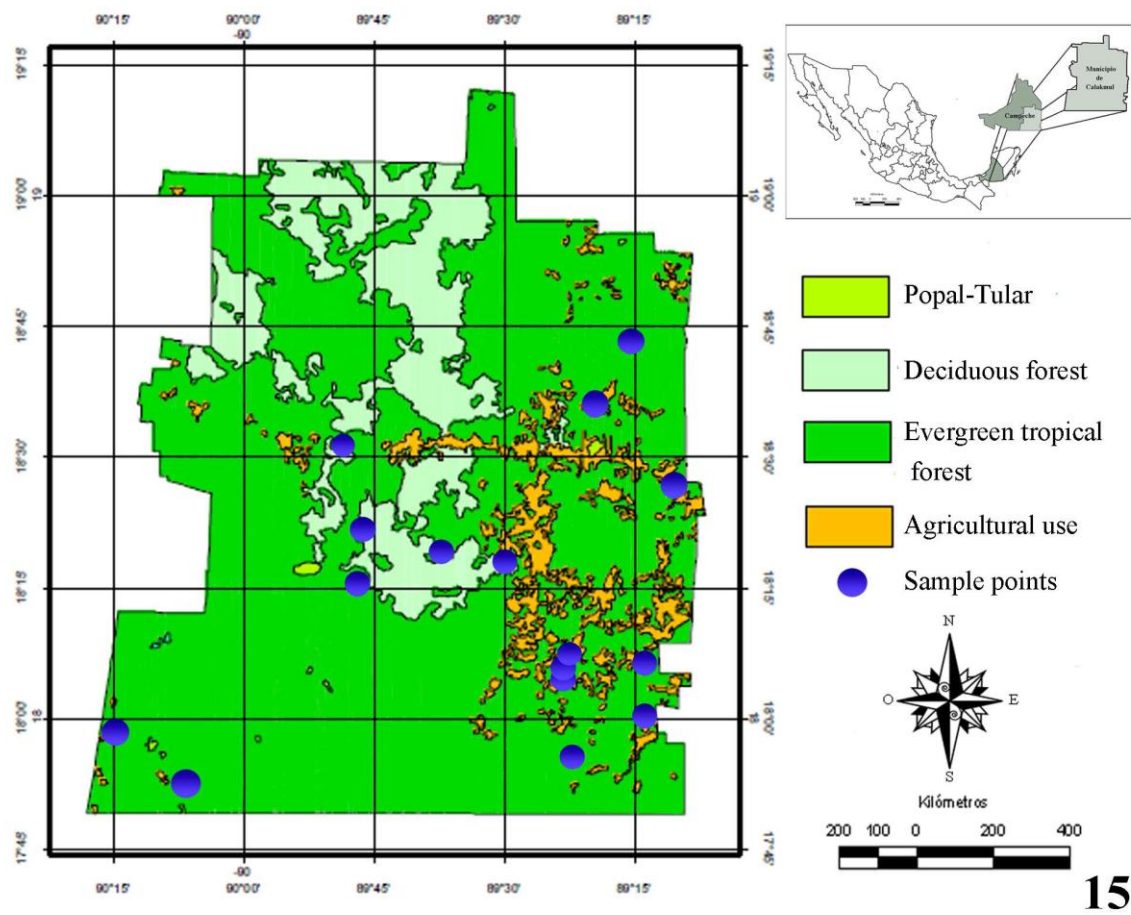


Figure 1.



15

Figure 2.



Figure 3.

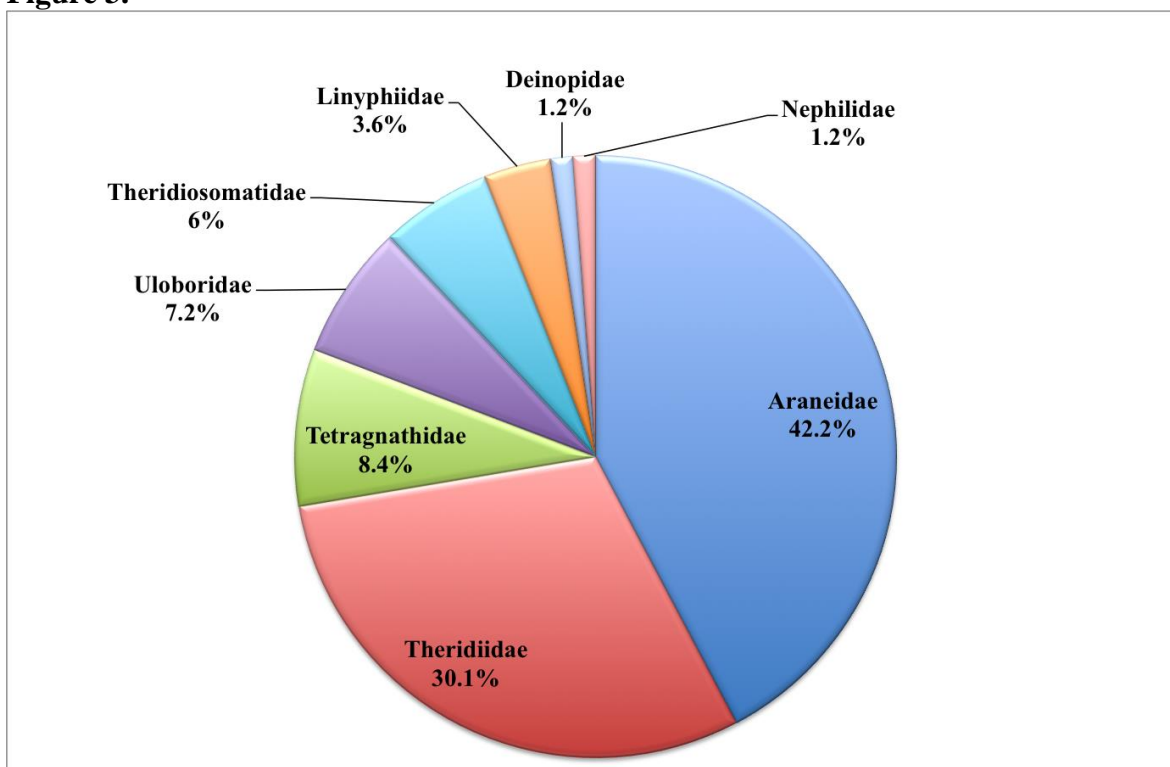


Figure 4.

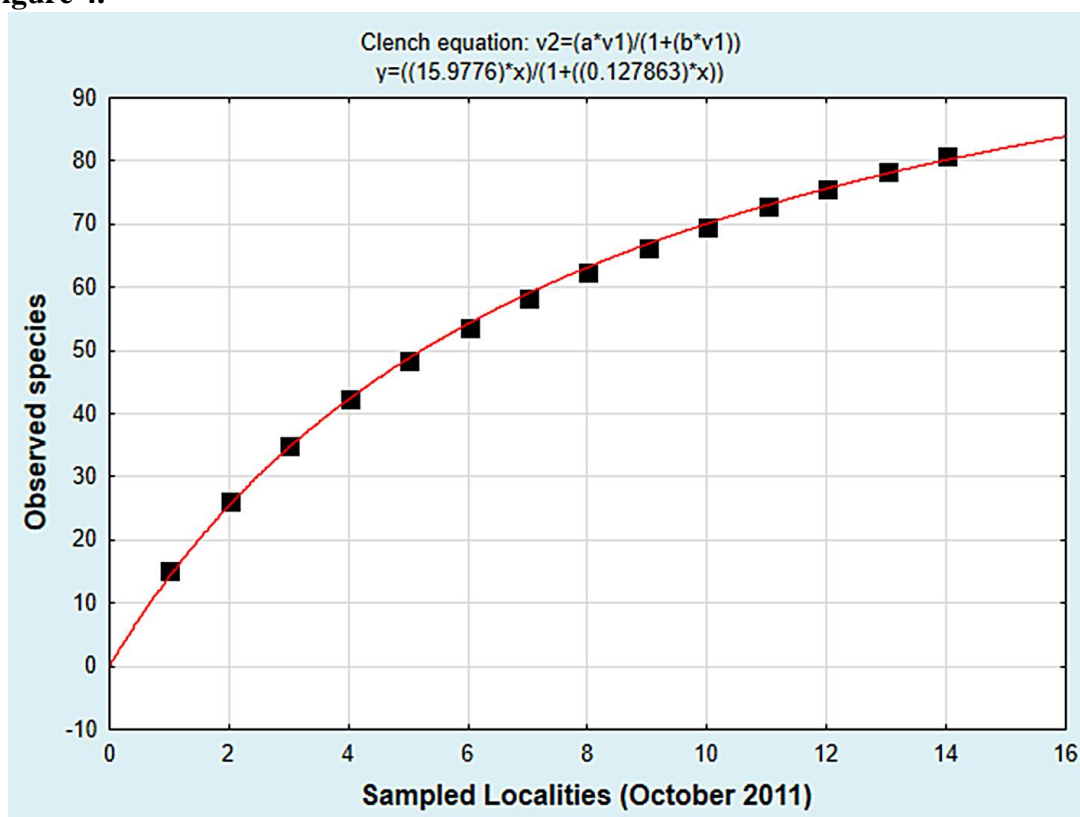


Figure 5.

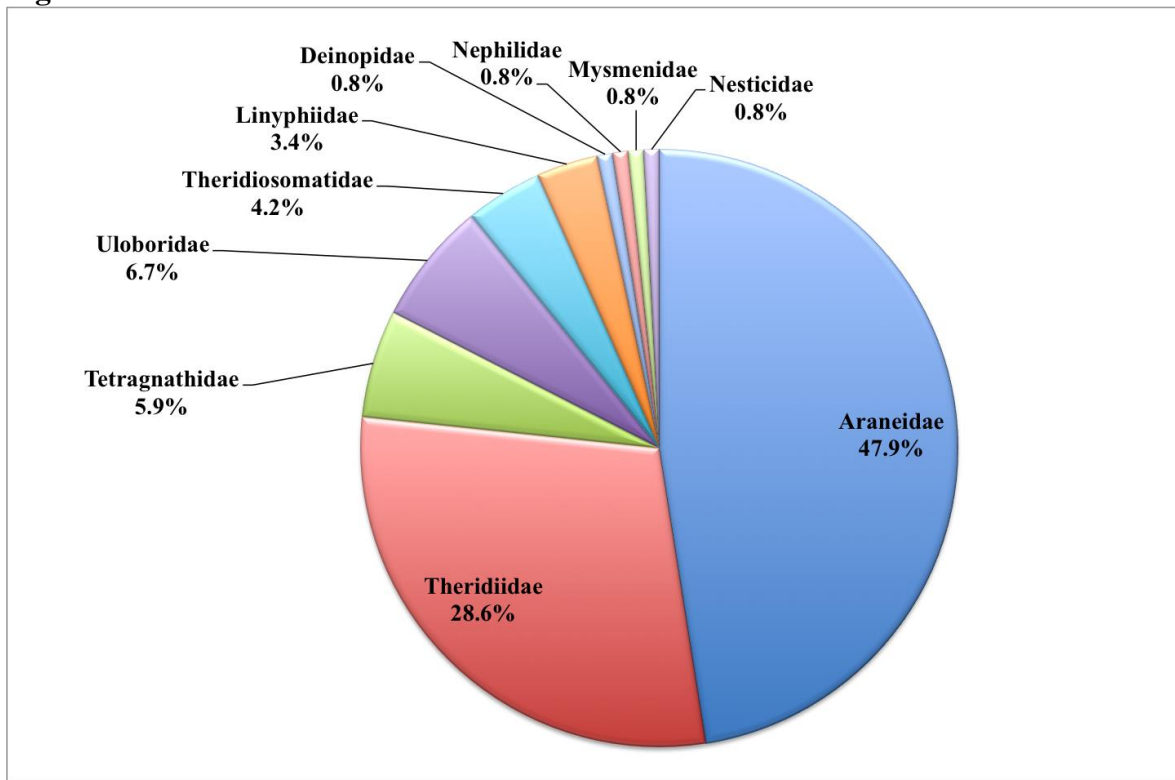


Figure legends.

Figure 1. Map of Calakmul municipality showing the 14 localities sampled in October 2011, showing the type of vegetation of each one.

Figure 2. Differences between localities where the spiders were collected with a high conservation level (left), and with perturbation (right).

Figure 3. Percentage of the diversity of spiders families of the Orbiculariae clade collected in Calakmul municipality in October 2011.

Figure 4. Species accumulation curve for the sampling made in October 2011. The X-axis represents the total number of the 14 sampled localities for this month, the Y-axis represents the total number of recorded species.

Figure 5. Percentage of the total diversity of spiders families of Orbiculariae clade for Calakmul municipality and Campeche state, considering the records until 2005 and new records of this work.