

Figure 1

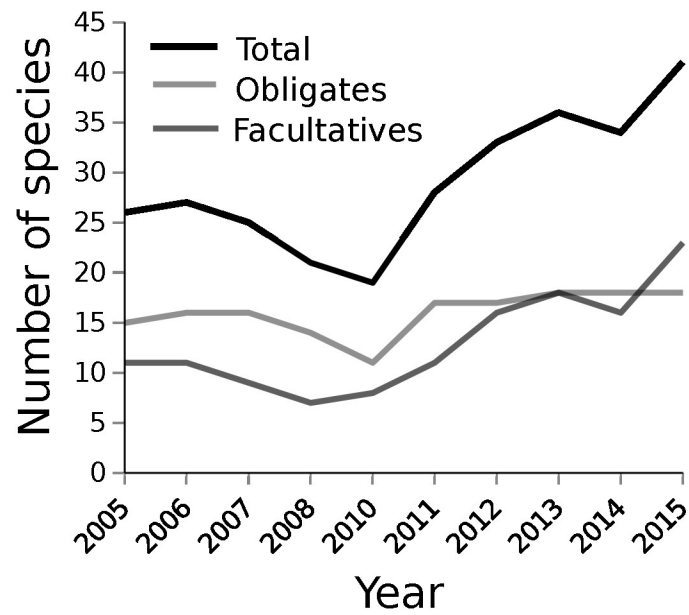


Figure 2

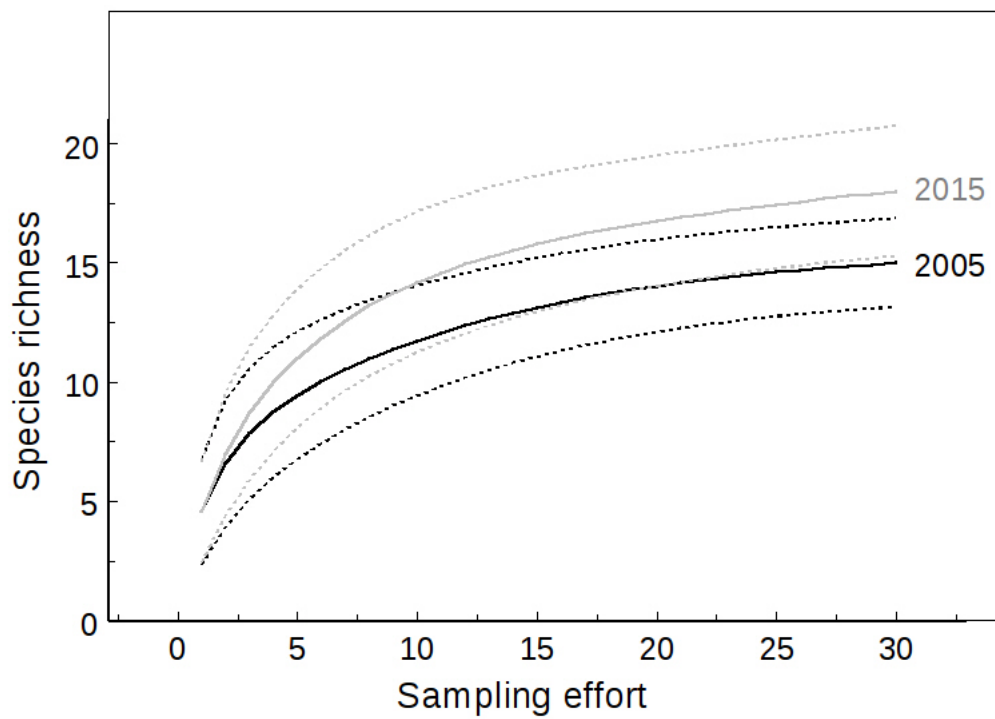


Figure 3

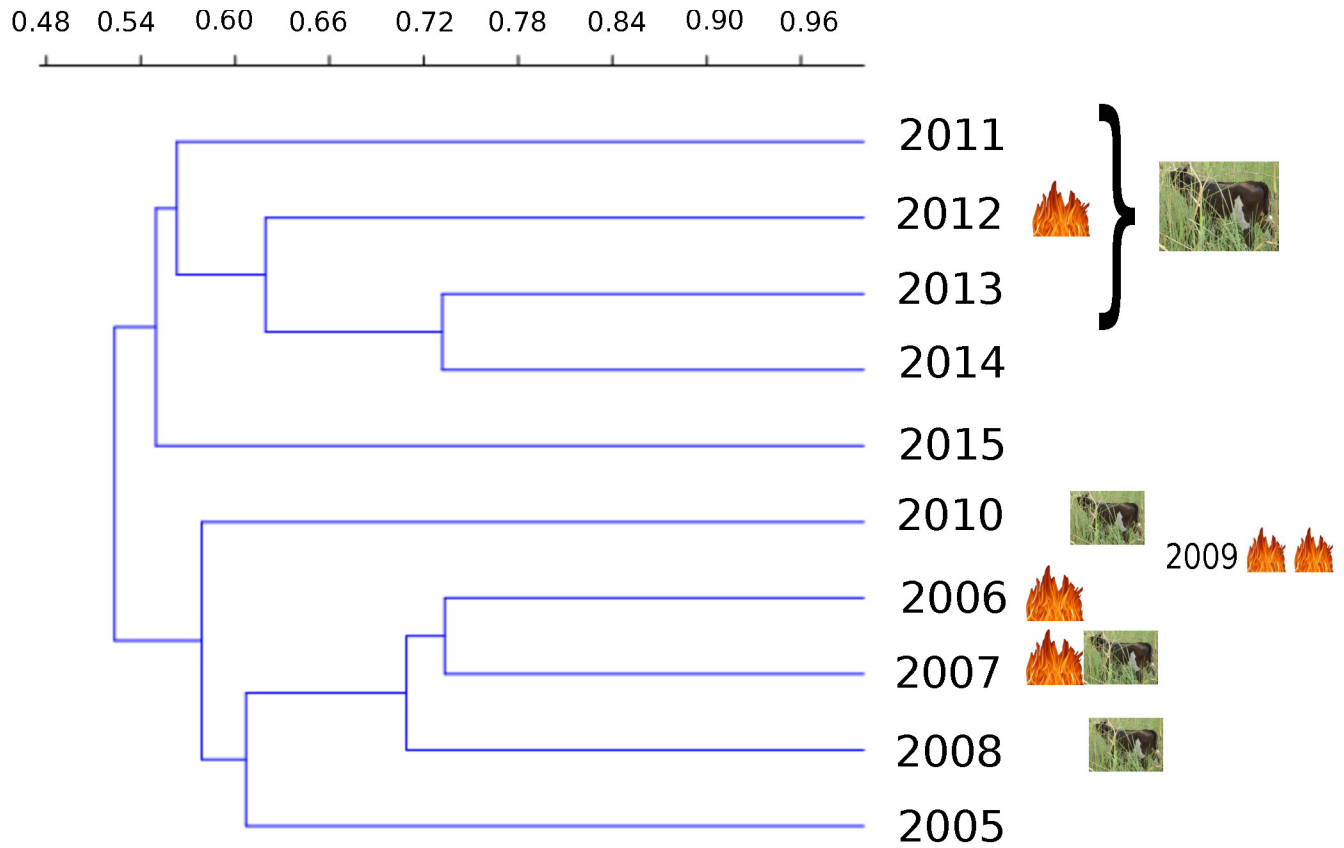


Figure 4

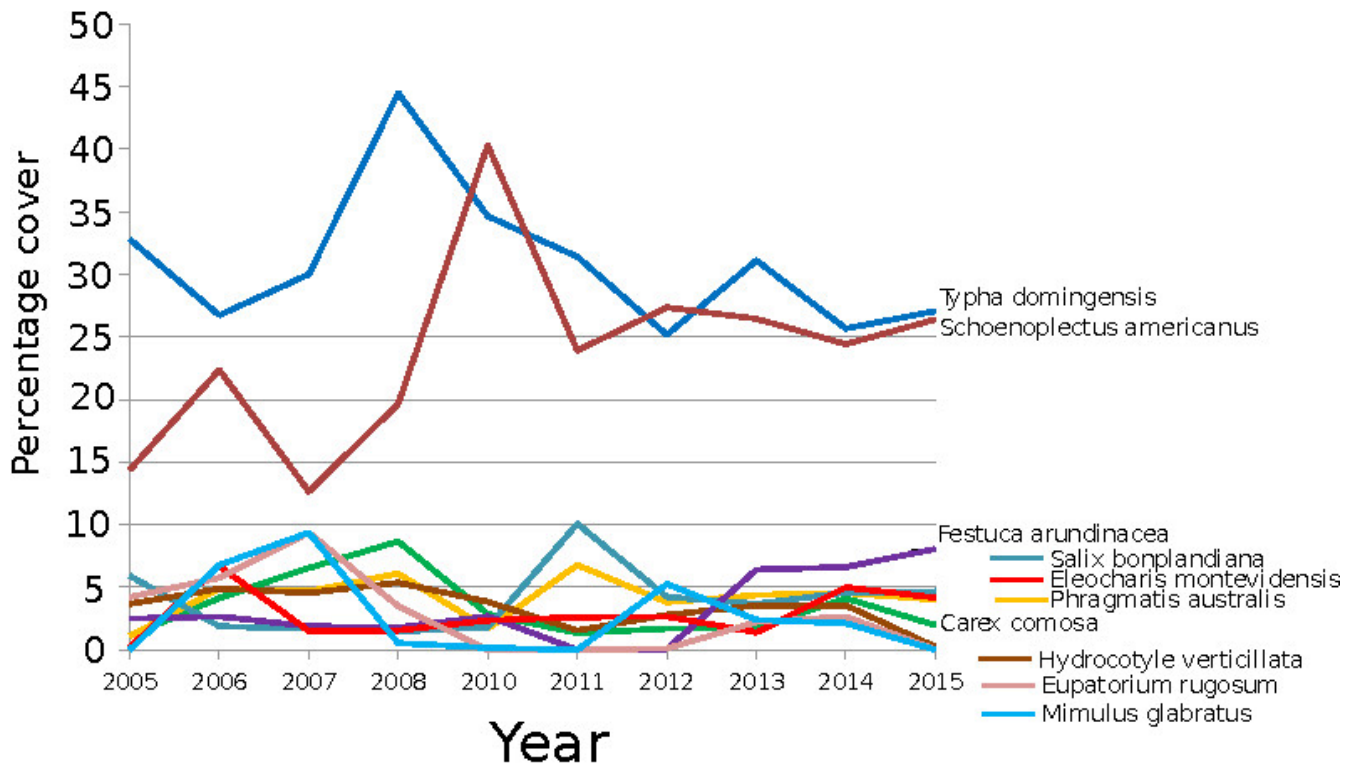
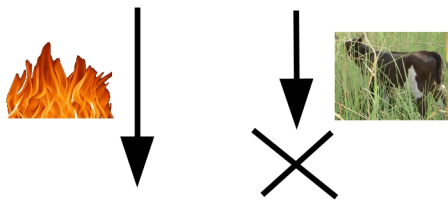


Figure 5



Low intensity unfrequent fires reduce overdominance by *Typha domingensis*, and favors obligate diversity. FacultatIVES in particular exotics do not colonize.



High intensity fires alters obligate species spatial distribution and favors colonization by facultatives and exotics. Stopping grazing but not fires allows substitution of native species by exotic invasive grasses.