



## Research note

# First record of the genus *Limnohalacarus* (Acari: Halacaridae) from Mexico

## *Primer registro del género Limnohalacarus (Acari: Halacaridae) de México*

Margarita Ojeda<sup>a,\*</sup>, Gerardo Rivas<sup>b</sup>, Fernando Álvarez<sup>c</sup>

<sup>a</sup> Colección Nacional de Ácaros, Instituto de Biología, Universidad Nacional Autónoma de México, 3er. Circuito exterior s/n, 04510 Ciudad de México, Mexico

<sup>b</sup> Departamento de Biología Comparada, Facultad de Ciencias, Universidad Nacional Autónoma de México, Circuito exterior s/n, 04510 Ciudad de México, Mexico

<sup>c</sup> Colección Nacional de Crustáceos, Instituto de Biología, Universidad Nacional Autónoma de México, Apartado postal 70-153, 04510 Ciudad de México, Mexico

Received 12 January 2016; accepted 4 May 2016

Available online 10 August 2016

### Abstract

*Limnohalacarus cultellatus* Viets, 1940 was collected from an anchialine cave (Cenote Bang) in the Ox Bel Ha system located near Tulum, Quintana Roo, Mexico. This species has been recorded from the Antilles, Brazil, Hungary, India, Madagascar, El Salvador and USA. The record presented here is the first one of the species for Mexico and the first record for an halacarid mite from continental waters in the country. A key to the species of *Limnohalacarus* is given as well as information about the variation shown by the organisms named under *L. cultellatus*.

All Rights Reserved © 2016 Universidad Nacional Autónoma de México, Instituto de Biología. This is an open access item distributed under the Creative Commons CC License BY-NC-ND 4.0.

**Keywords:** Acari; *Limnohalacarus*; Anchialine; Quintana Roo; First record

### Resumen

*Limnohalacarus cultellatus* Viets, 1940 fue recolectado en una cueva anchialina (Cenote Bang) del sistema Ox Bel Ha localizado cerca de Tulum, Quintana Roo, México. La especie se conoce de las Antillas, Brasil, Hungría, India, Madagascar, El Salvador y EUA. El registro que se presenta es el primero de la especie para México y también el primer reporte de un halacárido en aguas continentales en el país. Se proporciona una clave para las especies conocidas del género y se aporta información sobre la variación que se observa en los organismos ubicados en *L. cultellatus*. Derechos Reservados © 2016 Universidad Nacional Autónoma de México, Instituto de Biología. Este es un artículo de acceso abierto distribuido bajo los términos de la Licencia Creative Commons CC BY-NC-ND 4.0.

**Palabras clave:** Acari; *Limnohalacarus*; Anquihalino; Quintana Roo; Primer registro

Halacaridae are prostigmatid mites with more than 1,100 described species around the world (Bartsch, 2009), and as a group they are mainly known as the marine mites. Eight species of halacarids have been reported from Mexico: *Agaua variabilis* MacQuitty, *Agauopsis filirostris* MacQuitty, *Copidognathus ilsebartschi* MacQuitty, *Halacarus newelli* MacQuitty, *Simognathus crameriae* Rivas, *Actacarus giganteus* Krantz, *Copidognathus yucatanensis* Chatterjee & De Troch, and *C. unicusatus* Bartsch; the former 5 are distributed along the Pacific

(MacQuitty, 1983, 1984; Rivas, 2006) and the latter 3 in the Caribbean Sea (Chatterjee & De Troch, 2001; Krantz, 1971).

This family is mainly marine, occurring at depths ranging from the littoral zone to about 7,000 m (Bartsch, 1988); however, some 60 species can be found in continental and coastal fresh and brackish waters (Bartsch, 1996, 2008). In particular, the subfamily Limnohalacarinae is composed of 5 genera: *Hamohalacarus* Walter, *Himejacarus* Imamura, *Parasoldanelonyx* Viets, *Soldanelonyx* Walter and *Limnohalacarus* Walter; all of them with species that inhabit continental waters.

Particularly, the 13 species of *Limnohalacarus* have a worldwide distribution, living in fresh to slightly brackish waters (Bartsch, 2013; Pepato & Costa, 2015): *Limnohalacarus africanus* Walter, *L. australis* Bartsch, *L. capernaumi* Petrova,

\* Corresponding author.

E-mail address: [margojeda@gmail.com](mailto:margojeda@gmail.com) (M. Ojeda).

Peer Review under the responsibility of Universidad Nacional Autónoma de México.

Table 1  
Records and variation of the total body size and some of the plates of *Limnohalacarus cultellatus*.

Distribution	Habitat	Length/width ratio							References
		Idiosoma	Gnathosoma	AD	OC	PD	AE	GP	
Margarita, Curacao, Aruba and Bonaire Islands	Piped water, rivers and water in fissures	1.41	1.35	1.00	1.12	1.87	0.80	1.20	Viets (1940)
Andhara Pradesh, India	Brackish water, bay near confluence of a river	1.37	1.42	1.13	1.10	1.92	0.58	1.12	Chatterjee and Chang (2005)
Georgia and Wisconsin, USA	River	1.19	1.65	1.16	1.00	1.78	0.62	0.80	Bartsch (2011)
Northern Madagascar	River, riffle	1.19	NA	1.10	1.10	1.70	NA	NA	Bartsch (2013)
Rio Grande do Sul, Brazil	Lake with salinity gradient (brackish to freshwater)	1.47	1.28	1.01	1.06	1.53	0.60	0.71	Pepato and Costa (2015)
Yucatán Peninsula, Mexico	Anchialine cave	1.34	1.36	1.13	1.53	1.83	0.57	1.17	Present study

AD, anterior dorsal plate; AE, anterior epimeral plate; GP, genital plate; NA, not available; OC, ocular plate; PD, posterior dorsal plate.

*L. cultellatus* Viets, *L. dentatus* Bartsch, *L. fontinalis* Walter & Bader, *L. inopinatus* Fain & Lambrechts, *L. lanae* Green, *L. major* Bader, *L. mamillatus* Fain & Lambrechts, *L. novus* Bartsch, *L. portmanni* Bader and *L. wackeri* (Walter).

Only 2 species of Limnohalacarinae have been reported from the Neotropics. The first one, *L. cultellatus*, originally described from the Antilles, has also published records from the northern USA and El Salvador (Bartsch, 2011), the Caribbean region (Bartsch, 1984; Viets, 1940) and Brazil (Bartsch, 2011; Pepato & Costa, 2015). The second species, *L. mamillatus*, was described from an aquarium in Belgium and has been recorded in Brazil (Pepato & Costa, 2015).

Regarding anchialine systems, only a few records of aquatic mites exist from caves in Bermuda (Bartsch & Iliffe, 1985). No previous records of halacarids exist for the Yucatán Peninsula in Mexico, where large anchialine systems with hundreds of kilometers of flooded passages have developed. The typical taxa occurring in the anchialine systems of Yucatán are crustaceans: remipedes, amphipods, isopods, ostracods, thermosbaenaceans, and caridean shrimps (Álvarez, Iliffe, Benitez, Brankovits, & Villalobos, 2015).

We herein present a new record of *Limnohalacarus cultellatus* from Cenote Bang which is part of the Ox Bel Ha system, Tulum, Quintana Roo, Mexico. The samples of *L. cultellatus*, obtained in 2013 are the first for Mexico and also the first from an anchialine habitat. The morphological variations observed relative to the original description are presented (Table 1), and an identification key for females of all the species of *Limnohalacarus* is included.

The Ox Bel Ha system develops just to the south of the town of Tulum, Quintana Roo, Mexico (Fig. 1). Cenote Bang is located in the innermost section of the system about 12 km from the shore. Around Cenote Bang the submerged galleries develop at an average depth of 18 m and the halocline is present at a depth ranging from 18 to 21 m.

Samples were obtained with a plankton net (300 µm) from 0 to 8 m in the cenote. The contents were preserved in 70% ethanol. At the laboratory, mites were sorted under a stereoscopic

microscope, cleared in lactic acid and mounted in Hoyer's medium. The illustrations and measurements in micrometers (µm), were made using a Nikon Optiphot-2 phase contrast microscope. Microphotographs were obtained with an AxioCam MRC5 camera using a Carl Zeiss AxioZoom V16 microscope.

The specimen was collected under the scientific collector's license issued to F. Álvarez (FAUT 0104) by the Mexican environmental authority (Semarnat). The organism was deposited in the National Acarological Collection (CNAC) of the Institute of Biology, UNAM, México City, with the catalog number CNAC009211.

The abbreviations used in the diagnosis and redescription are: AD (anterior dorsal plate), AE (anterior epimeral plate), AP (anal plate), ds (dorsal setae, from anterior to posterior: ds-1 to ds-5), P-2 to P-4 (second to fourth palpal segment), GA (genitoanal plate), ε (famulus), gac (genital acetabula), glp (dorsal or lateral gland pores, from anterior to posterior: glp-1 to glp-5), GP (genital plate), GO (genital opening), OC (ocular plate), pas (parambulacral seta), PD (posterior dorsal plate), PE (posterior epimeral plate), pgs (perigenital setae), sgs (subgenital setae), ω (solenidium), legs (numbered I to IV). Segments, from distal to proximal region are: tarsus, tibia, genu, telofemur, basifemur, and trochanter. The chaetotaxy formulas exclude the solenidia, famuli and parambulacral setae from the trochanter to the tarsus. The number of bipectinate spines is given in parentheses. Lengths of leg segments are measured along their dorsal margin. Measurements are expressed in micrometers (µm).

#### Complementary description

Classification follows Krantz & Walter, 2009: 98–100.

Subclass Acari Leach, 1817

Superorder Acariformes Zakhvatkin, 1952

Order Trombidiformes Reuter, 1909

Superfamily Halacaroidea Cunliffe, 1955

Family Halacaridae Murray, 1877

Subfamily Limnohalacarinae Viets, 1927

Genus *Limnohalacarus* Walter, 1917

*Limnohalacarus cultellatus* Viets, 1940

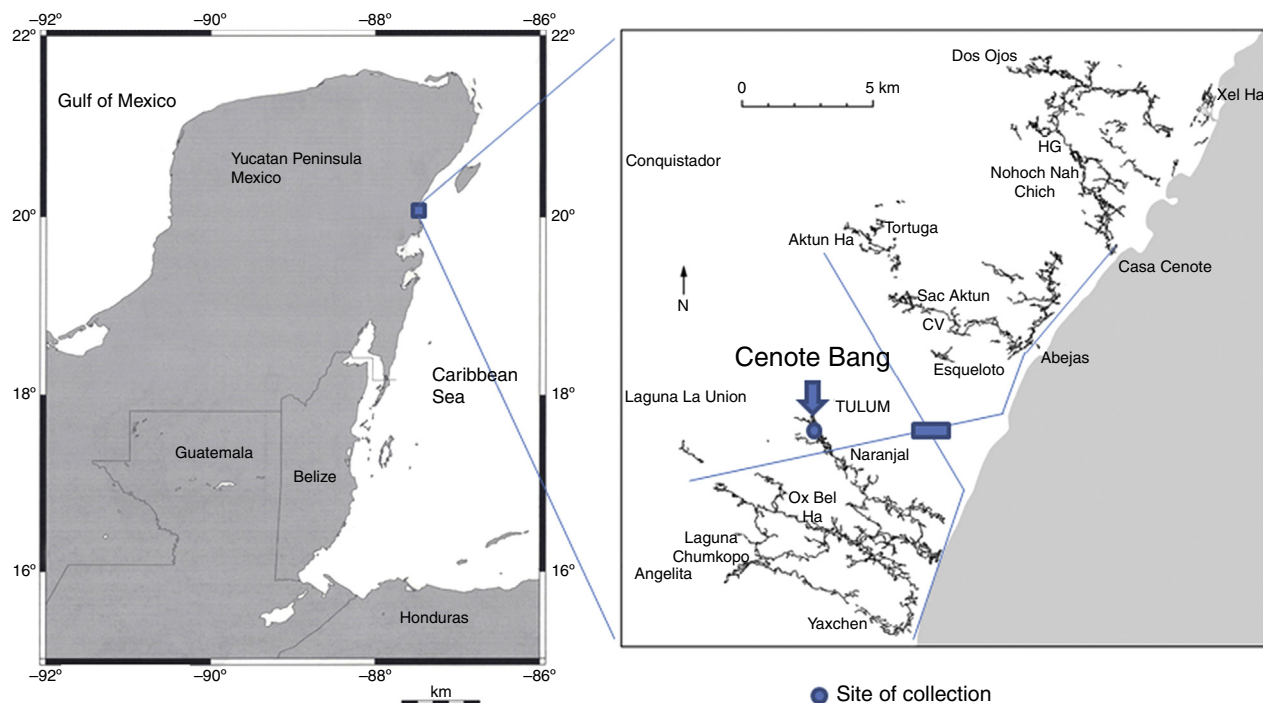


Figure 1. Map showing sampling site, Cenote Bang, in the Yucatán Peninsula, Mexico.

**Material examined.** One female (CNAC 009211), Cenote Bang, Tulum, Quintana Roo, Mexico ( $29^{\circ}57'30.63''\text{N}$ ,  $50^{\circ}09'14.50''\text{W}$ ), 4 December 2013, colls. O. Cortes and F. Álvarez.

**Diagnosis** [according with Viets (1940), Bartsch (2011, 2013) and Pepato and Costa (2015)]. Length 275–325  $\mu\text{m}$ . Dorsal plates reticulated, except for smooth anteriormost part of AD. Medial and lateral eye pigment absent. Length: width ratio of AD 1.0–1.2. OC divided and reticulated, with narrow triangular sclerite bearing gland pore. PD 1.5–2.1 times longer than wide and 2.5 times longer than AD. Second pair of dorsal setae present. Ventral plates separated. GP with 4–9 pairs of gac, 3, rarely 4, pairs of pgs and 2 pairs of sgs. Gnathosoma 1.3–1.5 times longer than wide; rostrum slender. Both pairs of maxillary setae slender. Pharyngeal plate removed from margin of gnathosomal base by more than half its length. P-2 basally abruptly widened, in lateral view rectangular with straight dorsal margin. Telfemur I, 1.6–1.8 times longer than wide. Tarsi with spiniform lamellae near bases. Trochanters I–IV with 1, 1, 1, 1 setae, basifemora with 4, 3, 2, 1 setae, genua III with 4 setae, and tibiae I–IV with 7, 6, 7, 6 setae. On tibiae I–III, 1, 1, 2 pectinate setae, on tibia IV all setae slender. Tibiae III and IV with 4 and 3 ventral setae, respectively. All tarsi with pairs of pas singlets. Claws on tarsus I slender, claws with lamellar basal process and delicate apical tines. Claws of tarsi II–IV with series of tines from apical accessory process to basal process. Male: not known.

**Redescription.** Female. Idiosoma 329  $\mu\text{m}$  long, 245  $\mu\text{m}$  wide (Fig. 2A). Dorsal plates reticulated (Fig. 2B). AD hexagonal, posterior border truncate, 1 small anterior projection in the

middle toward the front (Fig. 3A), length 67  $\mu\text{m}$ , width 76  $\mu\text{m}$ , length:width ratio 0.9. Medial eye pigment absent, ds-1 on an anterior area of AD and ds-2 on membranous cuticle between AD and OC. OC between slightly rounded and sub-pentagonal, 43  $\mu\text{m}$  long, 23  $\mu\text{m}$  wide, length:width ratio 1.5, separated from a triangular sclerite, 26  $\mu\text{m}$  long, 14  $\mu\text{m}$  wide, bearing gland pore.

Corneas and eye pigment not evident. PD elongated, 218  $\mu\text{m}$  long, 119  $\mu\text{m}$  wide, 3.2 times longer than AD. PD length:width ratio 1.8. Pairs of glp-4 and glp-5 on striated cuticle lateral to PD. Ventral plates AE, pairs of PE and GP separated by membranous cuticle. AE 116  $\mu\text{m}$  long, 215  $\mu\text{m}$  wide, with 3 pairs of ventral setae, PE with 3 setae. GP 162  $\mu\text{m}$  long, 138  $\mu\text{m}$  wide, with 3 pairs of pgs and 11–14 gac, GO in posterior part of ventral shield (Fig. 3B). Genital sclerites large, 68  $\mu\text{m}$  long, 31  $\mu\text{m}$  wide, with 2 pairs of sgs. Length of gnathosoma 97  $\mu\text{m}$ , width 71  $\mu\text{m}$ , gnathosoma length:width ratio 1.36; rostrum (Fig. 2C), 40  $\mu\text{m}$  long, equal to 0.41 of gnathosoma length. Dorsal and basal pairs of maxillary setae slender (Fig. 3C). Dorsal margin of P-2 straight (Fig. 3D). Legs slender (Figs. 2D, 3E–H). Length/height of telfemora I–IV: 2.6, 1.8, 1.7, 1.7 times, respectively. Telfemur/tibia length ratio I–IV: 0.99, 0.94, 0.66, 0.60. Leg chaetotaxy from trochanter to tarsus (solenidia, famuli and parambulacral setae excluded): I: 1, 4, 4, 6, 7(I), 4; II: 1, 3, 4, 6, 6(I), 3; III: 1, 2, 3, 4, 7(II), 4; IV: 1, 1, 3, 3, 6, 3. Tibia III with 2 bipectinate ventromedial and 2 slender and smooth ventrolateral setae. All tarsi with pairs of pas singlets. Claw I with long tines arranged along inner flank and distal outer portion of claw (Fig. 3I). Claws on tarsi II–IV with tines and a developed basal lamellar process.

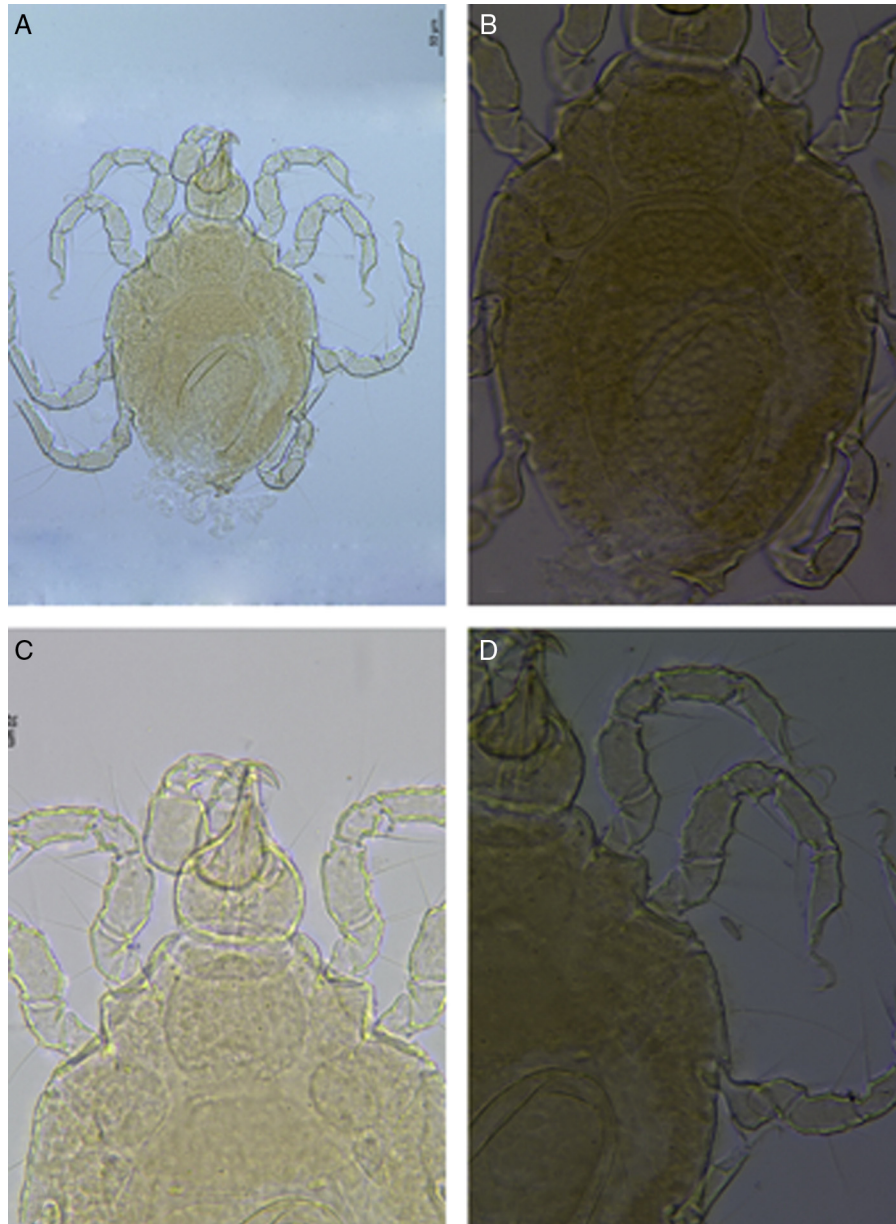


Figure 2. *Limnohalacarus cultellatus* Viets, 1940, female: A, habitus; B, idiosoma, dorsal plates; C, gnathosoma; D, legs I and II.

The habitat of Halacaridae has been mainly in the marine environment, which is interpreted as a successful secondary adaptation from their terrestrial prostigmads ancestors (Bartsch, 1989). The fact that around 5% of halacarid mites live in continental waters raise interesting questions of how they were able to invade freshwater habitats and how the ways of life played a role in this process (Bartsch, 1996; Delamare-Deboutteville, 1960). The evolutionary pathways of marine groups to freshwaters through subterranean systems implies interactions with hydrogeological processes at different scales (Ward & Palmer, 1994), aspects to consider for the invertebrate fauna of anchialine systems.

The halacarid recently collected from Cenote Bang fit well the diagnostic characteristics established by Bartsch (2011, 2013),

Pepato and Costa (2015), and Viets (1940), for *Limnohalacarus cultellatus*; the main measurements of the specimen are within the recorded range based on records given for the species around the world. In addition to the original description by Viets (1940) for *L. cultellatus*, 9 records, including the one presented here from the Yucatán Peninsula are known (Table 1). All of these are almost always based on 1 or 2 individuals, and because of this limited number an assessment of the morphological variation is difficult to obtain, it has yet to be established if it is a wide ranging species with a significant degree of morphological variation or a species complex, that in the future could be resolved incorporating molecular information about these mites. According to Bartsch (2013), *L. cultellatus*, *L. australis* (Australia), and *L. inopinatus* (Aquarium in Belgium) are members of the same

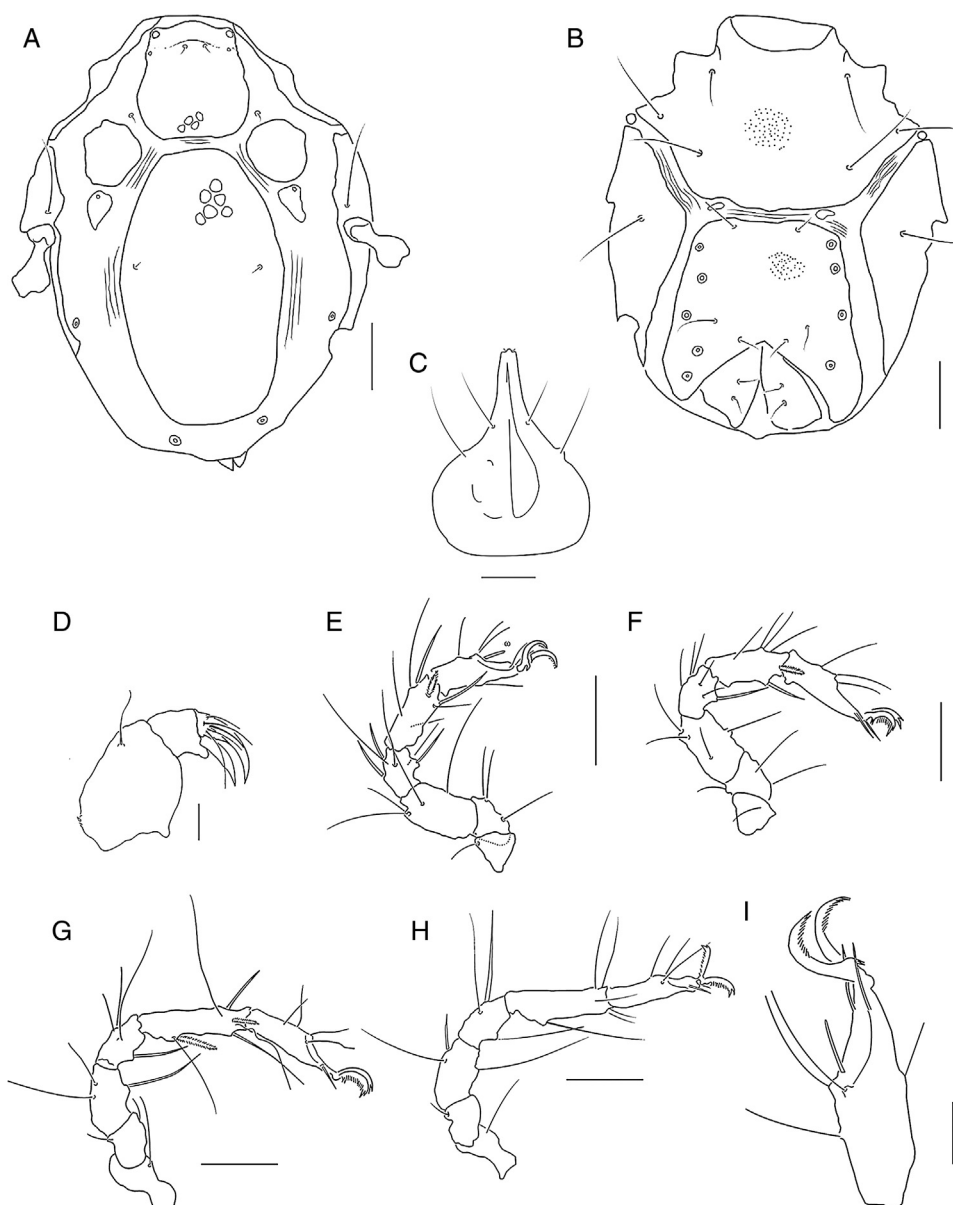


Figure 3. *Limnohalacarus cultellatus* Viets, 1940, female: A, idiosoma, dorsal view; B, idiosoma, ventral view; C, gnathosoma, ventral view; D, pedipalp, lateral view (scale bar = 20  $\mu\text{m}$ ); E, leg I; F, leg II; G, leg III; H, leg IV; I, tarsus I. Scale bars = 50  $\mu\text{m}$ .

clade. The differences observed between these species in the PD length: width ratio, the number of apical tines on claws I, and presence of rather thick, barbed setae on tibia IV could be interpreted as intraspecific variation and not as a variation between 2 species.

The species of *Limnohalacarus* have a cosmopolitan distribution in spite of not having efficient dispersal mechanisms. However, it is thought that the combination of an ancient radiation to freshwater since the Mesozoic and the possible parthenogenetic mode of reproduction of some of the species could contribute to their wide geographical distribution (Bartsch, 1996, 2008). The efforts to study halacarid mites in environments such as the anchialine caves are

necessary to answer questions about the delimitation of the species as well as to understand the diversification process.

The third author gratefully acknowledges the funding awarded through a Conacyt grant 155644(546) “Processes that create and maintain the biodiversity in an extreme environment: the anchialine systems of Yucatán”. We appreciate the assistance provided by Drs. Ilse Bartsch and Almir Pepato with part of the literature cited. We would also like to thank Olinka Cortes for obtaining the samples and Susana Guzmán from IBUNAM for the technical assistance in taking the microphotographs. We also thank the two anonymous reviewers for their contributions to the manuscript.

Key for females of all the known species of *Limnohalacarus*.

1a. Gland pores (glp) within OC, ventral plate fused.....	2
1b. Gland pores (glp) outside OC, ventral plates separated.....	8
2a. Gnathosoma length:width ratio 1.0 to 1.2.....	3
2b. Gnathosoma length:width ratio 1.3 to 1.7.....	<i>L. major</i>
3a. 0-1 subgenital setae.....	4
3b. 2 or more subgenital setae.....	5
4a. Apical maxillary setae wide.....	<i>L. lanae</i>
4b. Apical maxillary setae slender.....	<i>L. mamillatus</i>
5a. 4 or more small tines on claws III and IV.....	6
5b. 2 strong tines on claws III and IV.....	<i>L. dentatus</i>
6a. Length of idiosoma less than 300 µm.....	7
6b. Length of idiosoma higher than 300 µm.....	<i>L. fontinalis</i>
7a. AD length/width 0.9 and OC length/width 1.4 or more.....	<i>L. novus</i>
7b. AD length/width 0.7 and OC less than 1.4.....	<i>L. portmanni</i>
8a. Parambulacral setae of leg I doublets.....	9
8b. Parambulacral setae of leg I singlets.....	11
9a. 5 or more perigenital setae.....	10
9b. 3-4 perigenital setae.....	<i>L. africanus</i>
10a. Eye pigment and / or cornea absent.....	<i>L. capernaumi</i>
10b. Eye pigment and / or cornea present.....	<i>L. wackeri</i>
11a. Tibia IV with 1 pectinate spiniform setae.....	<i>L. inopinatus</i>
11b. Tibia IV without pectinate spiniform setae.....	12
12a. AD completely reticulated.....	<i>L. australis</i>
12b. AD reticulated, except anterior most part.....	<i>L. cultellatus</i>

## References

- Álvarez, F., Iliffe, T. M., Benitez, S., Brankovits, D., & Villalobos, J. L. (2015). New records of anchialine fauna from the Yucatán Peninsula, Mexico. *Check List*, 11, 1505.
- Bartsch, I. (1984). Halacaridae (Acari) von den Westindischen Inseln. *Bijdragen tot de Dierkunde*, 54, 185–196.
- Bartsch, I. (1988). Halacaroida. In R. P. Higgins, & H. Thiel (Eds.), *Introduction to the study of meiofauna* (pp. 417–422). Washington D.C.: Smithsonian Institution Press.
- Bartsch, I. (1989). Marine mites (Halacaroida: Acari): a geographical and ecological survey. *Hydrobiologia*, 178, 21–42.
- Bartsch, I. (1996). Halacarids (Halacaroida, Acari) in freshwater. Multiple invasions from the Paleozoic onwards? *Journal of Natural History*, 30, 67–99.
- Bartsch, I. (2008). Global diversity of halacarid mites (Halacaridae: Acari: Arachnida) in freshwater. *Hydrobiologia*, 595, 317–322.
- Bartsch, I. (2009). Checklist of marine and freshwater halacarid mite genera and species (Halacaridae: Acari) with notes on synonyms, habitats, distribution and descriptions of the taxa. *Zootaxa*, 1998, 1–170.
- Bartsch, I. (2011). North American freshwater Halacaridae (Acari): literature survey and new records. *International Journal of Acarology*, 37, 490–510.
- Bartsch, I. (2013). The freshwater halacarid genus *Limnohalacarus* (Halacaridae Acari), species diagnoses, distribution and relationships. *Abhandlungen und Verhandlungen des Naturwissenschaftlichen Vereins in Hamburg*, 47, 185–220.
- Bartsch, I., & Iliffe, T. M. (1985). The halacarid fauna (Halacaridae Acari) of Bermuda's Caves. *Stygologia*, 3, 300–321.
- Chatterjee, T., & De Troch, M. (2001). Halacaridae (Acari) from Punta Allen (Quintana Roo Mexico): description of one new and one known species of the genus *Copidognathus*. *Hydrobiologia*, 457, 235–244.

- Chatterjee, T., & Chang, C. Y. (2005). A new species of *Limnohalacarus* (Acari: Halacaridae) from India. *Bulletin de l'Institut Royal des Sciences Naturelles de Belgique Entomologie*, 75, 23–27.
- Delamare-Deboutteville, C. (1960). *Biologie des eaux souterraines littorales et continentales*. Paris: Herman.
- Krantz, G. W. (1971). The mites of Quintana Roo. II. *Actacarus giganteus*, a new species of arenicolous mite (Prostigmata: Halacaridae) from the Caribbean Coast. *Annals of the Entomological Society of America*, 64, 594–598.
- Krantz, G. W., & Walter, D. E. (2009). *A manual of Acarology* (3rd ed.). Lubbock, TX: Texas University Press.
- MacQuitty, M. (1983). Description of a new species of a marine mite, *Agauopsis filirostris* (Acari: Halacaroida) from southern California. *Acarologia*, 24, 59–64.
- MacQuitty, M. (1984). The marine Halacaroida (Acari) of California. *Journal of Natural History*, 18, 527–554.
- Pepato, A. R., & Costa, D. S. S. G. (2015). New records of the genus *Limnohalacarus* (Halacaridae, Trombidiformes) from southern Brazil. *Check List*, 11, 1500.
- Rivas, G. (2006). First record of *Simognathus* (Acari: Halacaridae) from Mexico, including the description of a new species. *Zootaxa*, 1259, 61–68.
- Viets, K. (1940). Zwei neue Porohalacaridae (Acari) aus Südamerika. *Zoologischer Anzeiger*, 130, 191–201.
- Ward, J. V., & Palmer, M. A. (1994). Distribution patterns of interstitial freshwater meiofauna over a range of spatial scales, with emphasis on alluvial river-aquifer systems. *Hydrobiologia*, 287, 147–156.